

Product datasheet for **TA345464**

CHREBP (MLXIPL) Rabbit Polyclonal Antibody

Product data:

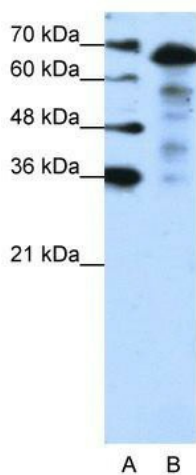
Product Type:	Primary Antibodies
Applications:	IHC, WB
Recommended Dilution:	WB, IHC
Reactivity:	Human
Host:	Rabbit
Isotype:	IgG
Clonality:	Polyclonal
Immunogen:	The immunogen for anti-MLXIPL antibody: synthetic peptide directed towards the N terminal of human MLXIPL. Synthetic peptide located within the following region: MAGALAGLAAGLQVPRVAPSPDSDSDTSEDPSLRRSAGLLRSQVIHSG
Formulation:	Liquid. Purified antibody supplied in 1x PBS buffer with 0.09% (w/v) sodium azide and 2% sucrose. <i>Note that this product is shipped as lyophilized powder to China customers.</i>
Purification:	Protein A purified
Conjugation:	Unconjugated
Storage:	Store at -20°C as received.
Stability:	Stable for 12 months from date of receipt.
Predicted Protein Size:	63 kDa
Gene Name:	MLX interacting protein like
Database Link:	NP_116569 Entrez Gene 51085 Human Q9NP71
Background:	MLXIPL is a basic helix-loop-helix leucine zipper transcription factor of the Myc/Max/Mad superfamily. This protein forms a heterodimeric complex and binds and activates, in a glucose-dependent manner, carbohydrate response element (ChoRE) motifs in the promoters of triglyceride synthesis genes.
Synonyms:	bHLHd14; CHREBP; MIO; MLX; MONDOB; WBSCR14; WS-bHLH



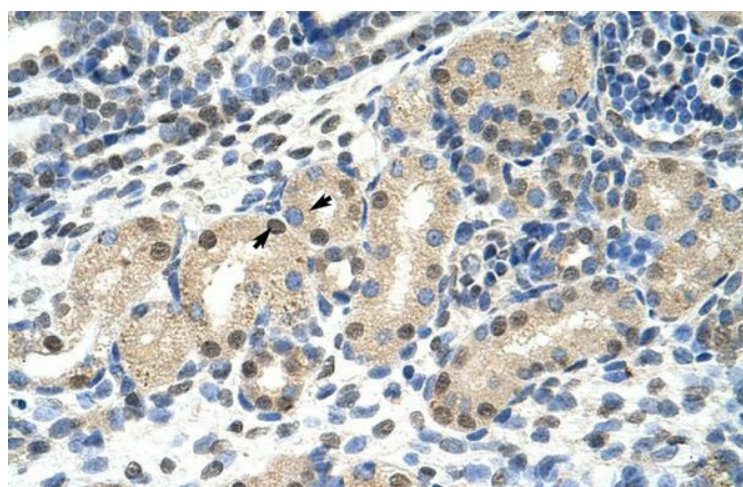
[View online »](#)

Note: Immunogen Sequence Homology: Human: 100%; Rat: 93%; Mouse: 93%; Pig: 86%; Bovine: 86%; Guinea pig: 86%

Product images:



WB Suggested Anti-MLXIPL Antibody Titration: 1.25 ug/ml; Positive Control: Jurkat cell lysate



Human kidney