

Product datasheet for **TA345463**

ZNF566 Rabbit Polyclonal Antibody

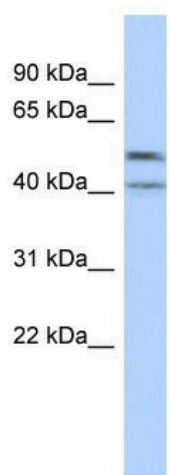
Product data:

Product Type:	Primary Antibodies
Applications:	WB
Recommended Dilution:	WB
Reactivity:	Human
Host:	Rabbit
Isotype:	IgG
Clonality:	Polyclonal
Immunogen:	The immunogen for anti-ZNF566 antibody: synthetic peptide directed towards the middle region of human ZNF566. Synthetic peptide located within the following region: ECKICGKAYSQSSQLISHHRIHTSEKPYEYRECGKNFNYPQLIQHQNLY
Formulation:	Liquid. Purified antibody supplied in 1x PBS buffer with 0.09% (w/v) sodium azide and 2% sucrose. <i>Note that this product is shipped as lyophilized powder to China customers.</i>
Purification:	Affinity Purified
Conjugation:	Unconjugated
Storage:	Store at -20°C as received.
Stability:	Stable for 12 months from date of receipt.
Predicted Protein Size:	49 kDa
Gene Name:	zinc finger protein 566
Database Link:	NP_116227 Entrez Gene 84924 Human Q969W8
Background:	ZNF566 may be involved in transcriptional regulation.
Synonyms:	FLJ14779; MGC12515
Note:	Immunogen Sequence Homology: Human: 100%; Rat: 93%; Rabbit: 86%; Dog: 79%; Pig: 79%; Horse: 79%; Bovine: 79%
Protein Families:	Transcription Factors



[View online »](#)

Product images:



WB Suggested Anti-ZNF566 Antibody Titration:
0.2-1 ug/ml; ELISA Titer: 1: 312500; Positive
Control: COLO205 cell lysate