

Product datasheet for **TA345462**

ZNF587 Rabbit Polyclonal Antibody

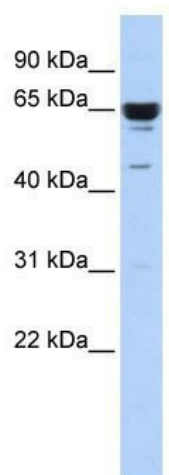
Product data:

Product Type:	Primary Antibodies
Applications:	WB
Recommended Dilution:	WB
Reactivity:	Human
Host:	Rabbit
Isotype:	IgG
Clonality:	Polyclonal
Immunogen:	The immunogen for anti-ZNF587 antibody: synthetic peptide directed towards the middle region of human ZNF587. Synthetic peptide located within the following region: CGKSFSECSLIKHRRHTGERPYECTKCGKTFQRSSTLLHHQSSHRRKA
Formulation:	Liquid. Purified antibody supplied in 1x PBS buffer with 0.09% (w/v) sodium azide and 2% sucrose.
Purification:	Affinity Purified
Conjugation:	Unconjugated
Storage:	Store at -20°C as received.
Stability:	Stable for 12 months from date of receipt.
Predicted Protein Size:	65 kDa
Gene Name:	zinc finger protein 587
Database Link:	NP_116217 Entrez Gene 84914 Human Q96SQ5
Background:	ZNF587 may be involved in transcriptional regulation.
Synonyms:	ZF6
Note:	Immunogen Sequence Homology: Human: 100%
Protein Families:	Transcription Factors



[View online »](#)

Product images:



WB Suggested Anti-ZNF587 Antibody Titration:
0.2-1 ug/ml; ELISA Titer: 1: 62500; Positive
Control: 721_B cell lysate