

## Product datasheet for **TA345460**

### Protein atonal homolog 8 (ATOH8) Rabbit Polyclonal Antibody

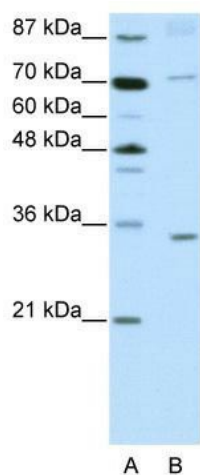
#### Product data:

Product Type:	Primary Antibodies
Applications:	WB
Recommended Dilution:	WB
Reactivity:	Human
Host:	Rabbit
Isotype:	IgG
Clonality:	Polyclonal
Immunogen:	The immunogen for anti-ATOH8 antibody: synthetic peptide directed towards the N terminal of human ATOH8. Synthetic peptide located within the following region: PWKTVCKELNGLKCLKRKGKEPARRANGYKTFRLDLEAPEPRAVATNGL
Formulation:	Liquid. Purified antibody supplied in 1x PBS buffer with 0.09% (w/v) sodium azide and 2% sucrose.
Purification:	Protein A purified
Conjugation:	Unconjugated
Storage:	Store at -20°C as received.
Stability:	Stable for 12 months from date of receipt.
Predicted Protein Size:	35 kDa
Gene Name:	atonal bHLH transcription factor 8
Database Link:	<a href="#">NP_116216</a> <a href="#">Entrez Gene 84913 Human</a> <a href="#">Q96SQ7</a>
Background:	The function of ATOH8 remains unknown.
Synonyms:	bHLHa21; HATH6
Note:	Immunogen Sequence Homology: Dog: 100%; Pig: 100%; Rat: 100%; Horse: 100%; Human: 100%; Bovine: 100%; Rabbit: 100%; Mouse: 93%; Guinea pig: 93%



[View online »](#)

## Product images:



WB Suggested Anti-ATOH8 Antibody Titration: 2.5 ug/ml; ELISA Titer: 1: 12500; Positive Control: Jurkat cell lysate