

Product datasheet for **TA345459**

ZNF382 Rabbit Polyclonal Antibody

Product data:

| | |
|-------------------------|--|
| Product Type: | Primary Antibodies |
| Applications: | WB |
| Recommended Dilution: | WB |
| Reactivity: | Human |
| Host: | Rabbit |
| Isotype: | IgG |
| Clonality: | Polyclonal |
| Immunogen: | The immunogen for anti-ZNF382 antibody: synthetic peptide directed towards the N terminal of human ZNF382. Synthetic peptide located within the following region: MPLQGSVSFKDVTVDFTQEEWQLDPAQKALYRDVMLENYCHFVSVGFHM |
| Formulation: | Liquid. Purified antibody supplied in 1x PBS buffer with 0.09% (w/v) sodium azide and 2% sucrose. |
| Purification: | Protein A purified |
| Conjugation: | Unconjugated |
| Storage: | Store at -20°C as received. |
| Stability: | Stable for 12 months from date of receipt. |
| Predicted Protein Size: | 64 kDa |
| Gene Name: | zinc finger protein 382 |
| Database Link: | NP_116214 Entrez Gene 84911 Human Q96SR6 |
| Background: | Members of the C2H2 zinc finger transcription factor family, such as ZNF382, play key roles in the regulation of cell proliferation, differentiation, and apoptosis in response to a variety of stimuli. Members of the C2H2 zinc finger transcription factor family, such as ZNF382, play key roles in the regulation of cell proliferation, differentiation, and apoptosis in response to a variety of stimuli (Gebelein et al., 1998). [supplied by OMIM] |
| Synonyms: | KS1 |

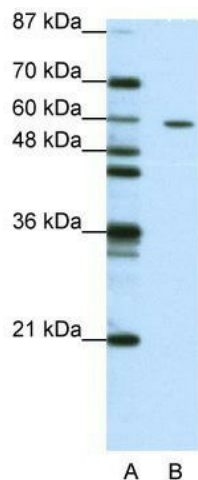


[View online »](#)

Note: Immunogen Sequence Homology: Dog: 100%; Pig: 100%; Horse: 100%; Human: 100%; Bovine: 100%; Rat: 93%; Mouse: 93%; Rabbit: 92%

Protein Families: Transcription Factors

Product images:



WB Suggested Anti-ZNF382 Antibody Titration:
1.25 ug/ml; ELISA Titer: 1: 1562500; Positive
Control: Jurkat cell lysate