

Product datasheet for TA345456

MINA53 (MINA) Rabbit Polyclonal Antibody

Product data:

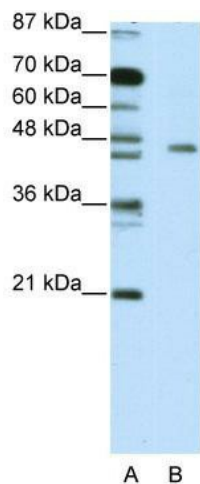
Product Type:	Primary Antibodies
Applications:	WB
Recommended Dilution:	WB
Reactivity:	Human
Host:	Rabbit
Isotype:	IgG
Clonality:	Polyclonal
Immunogen:	The immunogen for anti-MINA antibody: synthetic peptide directed towards the C terminal of human MINA. Synthetic peptide located within the following region: HGLRFPLSHLDALKQIWNSPAISVKDLKLTDEEKESLVLSLWTECLIQV
Formulation:	Liquid. Purified antibody supplied in 1x PBS buffer with 0.09% (w/v) sodium azide and 2% sucrose. <i>Note that this product is shipped as lyophilized powder to China customers.</i>
Purification:	Affinity Purified
Conjugation:	Unconjugated
Storage:	Store at -20°C as received.
Stability:	Stable for 12 months from date of receipt.
Predicted Protein Size:	53 kDa
Gene Name:	MYC induced nuclear antigen
Database Link:	NP_116167 Entrez Gene 84864 Human Q8IUF8
Background:	MINA protein is directly involved in ribosome biogenesis, most likely during the assembly process of preribosomal particles. MINA is also involved in cell proliferation. MINA may have a role in esophageal squamous cell carcinoma, colon cancer and lung cancer
Synonyms:	MDIG; MINA53; NO52; ROX
Note:	Immunogen Sequence Homology: Dog: 100%; Rat: 100%; Horse: 100%; Human: 100%; Rabbit: 100%; Pig: 93%; Mouse: 92%; Bovine: 92%; Guinea pig: 92%



[View online »](#)

Protein Families: Druggable Genome

Product images:



WB Suggested Anti-MINA Antibody Titration: 5.0 ug/ml; ELISA Titer: 1: 12500; Positive Control: Jurkat cell lysate; MINA is supported by BioGPS gene expression data to be expressed in Jurkat