

## Product datasheet for **TA345454**

### **MINA53 (MINA) Rabbit Polyclonal Antibody**

#### **Product data:**

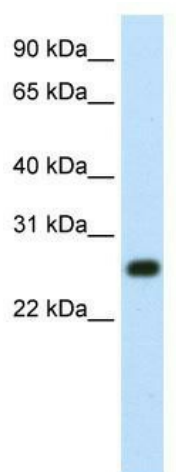
<b>Product Type:</b>	Primary Antibodies
<b>Applications:</b>	IHC, WB
<b>Recommended Dilution:</b>	WB, IHC
<b>Reactivity:</b>	Human
<b>Host:</b>	Rabbit
<b>Isotype:</b>	IgG
<b>Clonality:</b>	Polyclonal
<b>Immunogen:</b>	The immunogen for anti-MINA antibody: synthetic peptide directed towards the N terminal of human MINA. Synthetic peptide located within the following region: MPKKAKPTGSGKEEGPAPCKQMKLEAAGGPSALNFDSPSSLFESLISPIK
<b>Formulation:</b>	Liquid. Purified antibody supplied in 1x PBS buffer with 0.09% (w/v) sodium azide and 2% sucrose. <i>Note that this product is shipped as lyophilized powder to China customers.</i>
<b>Purification:</b>	Affinity Purified
<b>Conjugation:</b>	Unconjugated
<b>Storage:</b>	Store at -20°C as received.
<b>Stability:</b>	Stable for 12 months from date of receipt.
<b>Predicted Protein Size:</b>	32 kDa
<b>Gene Name:</b>	MYC induced nuclear antigen
<b>Database Link:</b>	<a href="#">NP_694822</a> <a href="#">Entrez Gene 84864 Human</a> <a href="#">Q8IUF8</a>
<b>Background:</b>	MINA is a protein with a molecular weight of 53 kDa, which is localized in the nucleus and with part of the protein concentrated in the nucleolus. It is a direct target gene of Myc and is involved in mammalian cell proliferation.
<b>Synonyms:</b>	MDIG; MINA53; NO52; ROX
<b>Note:</b>	Immunogen Sequence Homology: Human: 100%; Pig: 86%; Rat: 79%; Horse: 79%; Rabbit: 79%



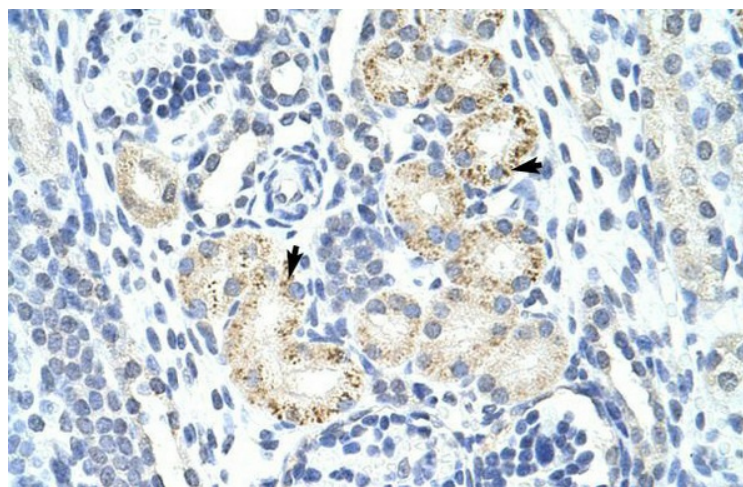
[View online »](#)

Protein Families: Druggable Genome

### Product images:



WB Suggested Anti-MINA Antibody Titration: 1.25 ug/ml; Positive Control: HepG2 cell lysate



Human kidney