

## Product datasheet for **TA345453**

### ZNF496 Rabbit Polyclonal Antibody

#### Product data:

Product Type:	Primary Antibodies
Applications:	WB
Recommended Dilution:	WB
Reactivity:	Human
Host:	Rabbit
Isotype:	IgG
Clonality:	Polyclonal
Immunogen:	The immunogen for anti-ZNF496 antibody: synthetic peptide directed towards the N terminal of human ZNF496. Synthetic peptide located within the following region: MPTALCPRVLAPKESEEPRKMRSPGENPSPQGELPSESSRRLFRFRY
Formulation:	Liquid. Purified antibody supplied in 1x PBS buffer with 0.09% (w/v) sodium azide and 2% sucrose. <i>Note that this product is shipped as lyophilized powder to China customers.</i>
Purification:	Protein A purified
Conjugation:	Unconjugated
Storage:	Store at -20°C as received.
Stability:	Stable for 12 months from date of receipt.
Predicted Protein Size:	67 kDa
Gene Name:	zinc finger protein 496
Database Link:	<a href="#">NP_116141</a> <a href="#">Entrez Gene 84838 Human</a> <a href="#">Q96IT1</a>



[View online »](#)

**Background:**

ZNF496 contains a SCAN box, a KRAB-A domain, and four consensus C2H2-type zinc fingers preceded by a unique finger derivative, referred to herein as the C2HR motif. The C2HR motif functions to mediate protein-protein interaction with the cysteine-rich (C5HCH) domain of NSD1 in a Zn(II)-dependent fashion, and when tethered to RNA polymerase II promoters, represses transcription in an NSD1-dependent manner. ZNF496 contains a novel type of zinc finger motif that functions as a docking site for NSD1 and is more than just a degenerate evolutionary remnant of a C2H2 motif.

**Synonyms:**

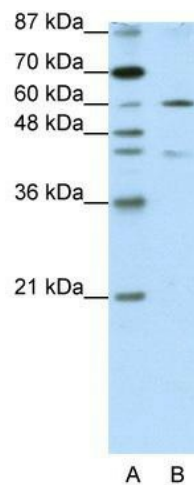
NIZP1; ZFP496; ZKSCAN17; ZSCAN49

**Note:**

Immunogen Sequence Homology: Dog: 100%; Pig: 100%; Rat: 100%; Horse: 100%; Human: 100%; Mouse: 100%; Sheep: 100%; Bovine: 100%; Rabbit: 93%; Guinea pig: 93%

**Protein Families:**

Transcription Factors

**Product images:**

WB Suggested Anti-ZNF496 Antibody Titration:  
1.25 ug/ml; ELISA Titer: 1: 62500; Positive Control:  
HepG2 cell lysate