

## Product datasheet for **TA345450**

### SSBP4 Rabbit Polyclonal Antibody

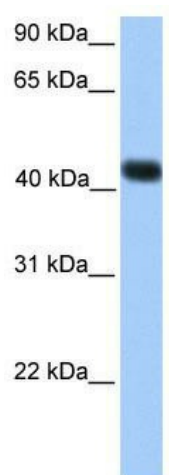
#### Product data:

Product Type:	Primary Antibodies
Applications:	WB
Recommended Dilution:	WB
Reactivity:	Human
Host:	Rabbit
Isotype:	IgG
Clonality:	Polyclonal
Immunogen:	The immunogen for anti-SSBP4 antibody: synthetic peptide directed towards the C terminal of human SSBP4. Synthetic peptide located within the following region: DGLPKSSPGAVAGLSNAPGTPRDDGEMAAAGTFLHPFPSESYSYSPGMTMSV
Formulation:	Liquid. Purified antibody supplied in 1x PBS buffer with 0.09% (w/v) sodium azide and 2% sucrose. <i>Note that this product is shipped as lyophilized powder to China customers.</i>
Purification:	Affinity Purified
Conjugation:	Unconjugated
Storage:	Store at -20°C as received.
Stability:	Stable for 12 months from date of receipt.
Predicted Protein Size:	37 kDa
Gene Name:	single stranded DNA binding protein 4
Database Link:	<a href="#">NP_001009998</a> <a href="#">Entrez Gene 170463 Human</a> <a href="#">Q9BVG4</a>
Background:	SSBP4 contains 1 LisH domain. The exact function of SSBP4 remains unknown.
Synonyms:	MGC3181
Note:	Immunogen Sequence Homology: Dog: 100%; Rat: 100%; Human: 100%; Mouse: 100%; Pig: 93%; Bovine: 93%; Guinea pig: 93%; Horse: 92%; Rabbit: 92%; Zebrafish: 92%; Yeast: 82%
Protein Families:	Transcription Factors



[View online »](#)

## Product images:



WB Suggested Anti-SSBP4 Antibody Titration: 0.2-1 ug/ml; Positive Control: Transfected 293T