

## Product datasheet for **TA345448**

### INSM2 Rabbit Polyclonal Antibody

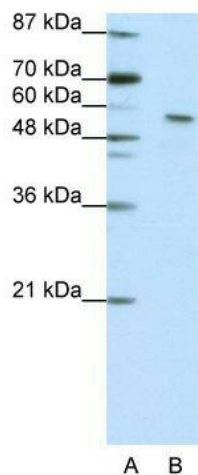
#### Product data:

Product Type:	Primary Antibodies
Applications:	WB
Recommended Dilution:	WB
Reactivity:	Human
Host:	Rabbit
Isotype:	IgG
Clonality:	Polyclonal
Immunogen:	The immunogen for anti-INSM2 antibody: synthetic peptide directed towards the N terminal of human INSM2. Synthetic peptide located within the following region: KRTGGLYRVRLAERVFPLLGPQGAPPFLEEAPSASLPGAERATPPTREEP
Formulation:	Liquid. Purified antibody supplied in 1x PBS buffer with 0.09% (w/v) sodium azide and 2% sucrose. <i>Note that this product is shipped as lyophilized powder to China customers.</i>
Purification:	Protein A purified
Conjugation:	Unconjugated
Storage:	Store at -20°C as received.
Stability:	Stable for 12 months from date of receipt.
Predicted Protein Size:	59 kDa
Gene Name:	INSM transcriptional repressor 2
Database Link:	<a href="#">NP_115983</a> <a href="#">Entrez Gene 84684 Human</a> <a href="#">Q96T92</a>
Background:	The function of INSM2 remains unknown.
Synonyms:	IA-6; IA6; mlt1
Note:	Immunogen Sequence Homology: Human: 100%



[View online »](#)

## Product images:



WB Suggested Anti-INSM2 Antibody Titration: 2.5 ug/ml; ELISA Titer: 1: 62500; Positive Control: Jurkat cell lysate