

## Product datasheet for **TA345447**

### KDM2B Rabbit Polyclonal Antibody

#### Product data:

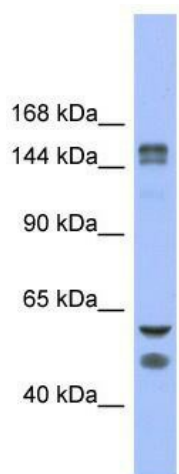
Product Type:	Primary Antibodies
Applications:	WB
Recommended Dilution:	WB
Reactivity:	Human
Host:	Rabbit
Isotype:	IgG
Clonality:	Polyclonal
Immunogen:	The immunogen for anti-FBXL10 antibody: synthetic peptide directed towards the middle region of human FBXL10. Synthetic peptide located within the following region: LSFFKRCGNICHIDLRYCKQVTEGCEQFIAEMSVSVQFGQVEEKLLQKL
Formulation:	Liquid. Purified antibody supplied in 1x PBS buffer with 0.09% (w/v) sodium azide and 2% sucrose. <i>Note that this product is shipped as lyophilized powder to China customers.</i>
Purification:	Affinity Purified
Conjugation:	Unconjugated
Storage:	Store at -20°C as received.
Stability:	Stable for 12 months from date of receipt.
Predicted Protein Size:	152 kDa
Gene Name:	lysine demethylase 2B
Database Link:	<a href="#">NP_115979</a> <a href="#">Entrez Gene 84678 Human</a> <a href="#">Q8NHM5</a>
Background:	FBXL10 is a member of the F-box protein family which is characterized by an approximately 40 amino acid motif, the F-box. The F-box proteins constitute one of the four subunits of ubiquitin protein ligase complex called SCFs (SKP1-cullin-F-box), which fun
Synonyms:	CXXC2; Fbl10; FBXL10; JHDM1B; PCCX2
Note:	Immunogen Sequence Homology: Dog: 100%; Pig: 100%; Rat: 100%; Horse: 100%; Human: 100%; Mouse: 100%; Bovine: 100%; Rabbit: 100%; Guinea pig: 100%; Zebrafish: 79%



[View online »](#)

Protein Families: Druggable Genome

### Product images:



WB Suggested Anti-FBXL10 Antibody Titration:  
0.2-1 ug/ml; ELISA Titer: 1: 62500; Positive  
Control: Human Stomach