

## Product datasheet for **TA345446**

### **PGBD1 Rabbit Polyclonal Antibody**

#### **Product data:**

Product Type:	Primary Antibodies
Applications:	WB
Recommended Dilution:	WB
Reactivity:	Human
Host:	Rabbit
Isotype:	IgG
Clonality:	Polyclonal
Immunogen:	The immunogen for anti-PGBD1 antibody: synthetic peptide directed towards the C terminal of human PGBD1. Synthetic peptide located within the following region: PQISQPSIVKVYDECKEGVAKMDQIISKYRVRIRSKKWYSILVSYMIDVA
Formulation:	Liquid. Purified antibody supplied in 1x PBS buffer with 0.09% (w/v) sodium azide and 2% sucrose. <i>Note that this product is shipped as lyophilized powder to China customers.</i>
Purification:	Protein A purified
Conjugation:	Unconjugated
Storage:	Store at -20°C as received.
Stability:	Stable for 12 months from date of receipt.
Predicted Protein Size:	93 kDa
Gene Name:	piggyBac transposable element derived 1
Database Link:	<a href="#">NP_115896</a> <a href="#">Entrez Gene 84547 Human</a> <a href="#">Q96JS3</a>



[View online »](#)

**Background:**

PGBD1 belongs to the subfamily of piggyBac transposable element derived (PGBD) genes. The PGBD proteins appear to be novel, with no obvious relationship to other transposases, or other known protein families. This gene product is specifically expressed in the brain, however, its exact function is not known. Western blots using two different antibodies against two unique regions of this protein target confirm the same apparent molecular weight in our tests. The piggyBac family of proteins, found in diverse animals, are transposases related to the transposase of the canonical piggyBac transposon from the moth, *Trichoplusia ni*. This family also includes genes in several genomes, including human, that appear to have been derived from the piggyBac transposons. This gene belongs to the subfamily of piggyBac transposable element derived (PGBD) genes. The PGBD proteins appear to be novel, with no obvious relationship to other transposases, or other known protein families. This gene product is specifically expressed in the brain, however, its exact function is not known.

**Synonyms:**

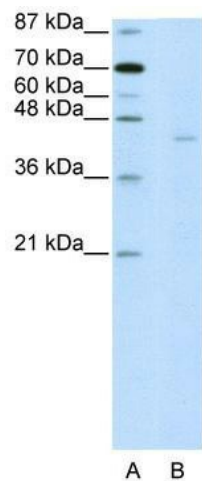
dj874C20.4; HUCEP-4; SCAND4

**Note:**

Immunogen Sequence Homology: Pig: 100%; Human: 100%; Bovine: 100%; Rabbit: 100%; Horse: 93%; Dog: 86%; Rat: 86%; Guinea pig: 79%

**Protein Families:**

Druggable Genome, Transcription Factors

**Product images:**

WB Suggested Anti-PGBD1 Antibody Titration: 2.5 ug/ml; ELISA Titer: 1: 62500; Positive Control: HepG2 cell lysate