

Product datasheet for **TA345442**

ZNF333 Rabbit Polyclonal Antibody

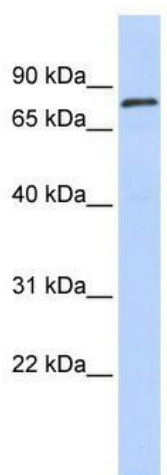
Product data:

Product Type:	Primary Antibodies
Applications:	WB
Recommended Dilution:	WB
Reactivity:	Human
Host:	Rabbit
Isotype:	IgG
Clonality:	Polyclonal
Immunogen:	The immunogen for anti-ZNF333 antibody: synthetic peptide directed towards the N terminal of human ZNF333. Synthetic peptide located within the following region: QCRTLASRGTPPCKPSCVSQLGQRAEPKATERGILRATGVAWESQLKPEE
Formulation:	Liquid. Purified antibody supplied in 1x PBS buffer with 0.09% (w/v) sodium azide and 2% sucrose.
Purification:	Affinity Purified
Conjugation:	Unconjugated
Storage:	Store at -20°C as received.
Stability:	Stable for 12 months from date of receipt.
Predicted Protein Size:	75 kDa
Gene Name:	zinc finger protein 333
Database Link:	NP_115809 Entrez Gene 84449 Human Q96JL9
Background:	ZNF333 belongs to the krueppel C2H2-type zinc-finger protein family. It contains 10 C2H2-type zinc fingers and 2 KRAB domains. ZNF333 may be involved in transcriptional regulation.
Synonyms:	KIAA1806
Note:	Immunogen Sequence Homology: Human: 100%
Protein Families:	Transcription Factors



[View online »](#)

Product images:



WB Suggested Anti-ZNF333 Antibody Titration:
0.2-1 ug/ml; ELISA Titer: 1: 12500; Positive
Control: Human Muscle