

Product datasheet for **TA345439**

ZNF397 Rabbit Polyclonal Antibody

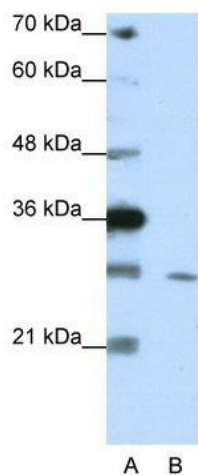
Product data:

Product Type:	Primary Antibodies
Applications:	IHC, WB
Recommended Dilution:	WB, IHC
Reactivity:	Human
Host:	Rabbit
Isotype:	IgG
Clonality:	Polyclonal
Immunogen:	The immunogen for anti-ZNF397 antibody: synthetic peptide directed towards the C terminal of human ZNF397. Synthetic peptide located within the following region: SAIRWECVSPGSPGDIIAAEATHSTISCFAINTLPATILPSKNVNRKYF
Formulation:	Liquid. Purified antibody supplied in 1x PBS buffer with 0.09% (w/v) sodium azide and 2% sucrose. <i>Note that this product is shipped as lyophilized powder to China customers.</i>
Purification:	Protein A purified
Conjugation:	Unconjugated
Storage:	Store at -20°C as received.
Stability:	Stable for 12 months from date of receipt.
Predicted Protein Size:	31 kDa
Gene Name:	zinc finger protein 397
Database Link:	NP_115723 Entrez Gene 84307 Human Q8NF99
Background:	ZNF397 belongs to the krueppel C2H2-type zinc-finger protein family. This gene product, isoform 3, acts as a DNA-dependent transcriptional repressor.
Synonyms:	ZNF47; ZSCAN15
Note:	Immunogen Sequence Homology: Human: 100%
Protein Families:	Transcription Factors

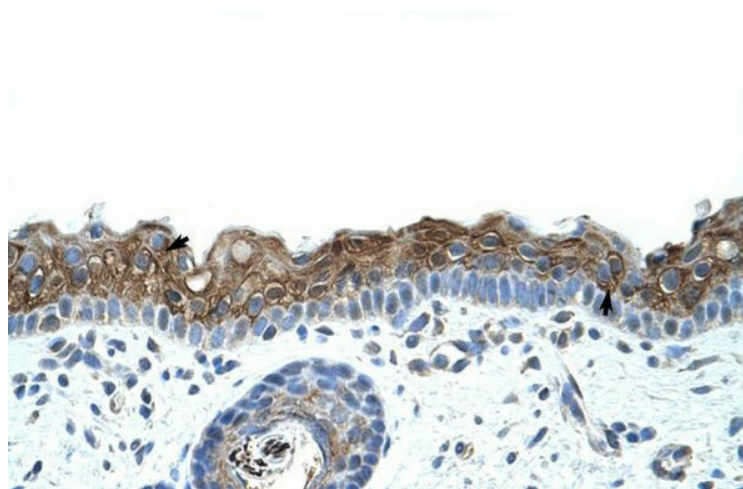


[View online »](#)

Product images:



WB Suggested Anti-ZNF397 Antibody Titration: 1.25 ug/ml; Positive Control: HepG2 cell lysate



Human Skin