

Product datasheet for **TA345438**

ZNRF1 Rabbit Polyclonal Antibody

Product data:

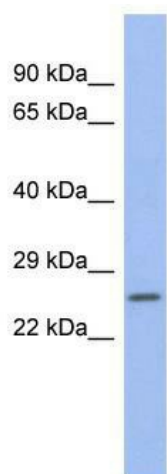
Product Type:	Primary Antibodies
Applications:	WB
Recommended Dilution:	WB
Reactivity:	Human
Host:	Rabbit
Isotype:	IgG
Clonality:	Polyclonal
Immunogen:	The immunogen for anti-ZNRF1 antibody: synthetic peptide directed towards the N terminal of human ZNRF1. Synthetic peptide located within the following region: MGGKQSTAARSRGPFPGVSTDDSAVPPPGGAPHFGHYRTGGGAMGLRSRS
Formulation:	Liquid. Purified antibody supplied in 1x PBS buffer with 0.09% (w/v) sodium azide and 2% sucrose. <i>Note that this product is shipped as lyophilized powder to China customers.</i>
Purification:	Affinity Purified
Conjugation:	Unconjugated
Storage:	Store at -20°C as received.
Stability:	Stable for 12 months from date of receipt.
Predicted Protein Size:	24 kDa
Gene Name:	zinc and ring finger 1, E3 ubiquitin protein ligase
Database Link:	NP_115644 Entrez Gene 84937 Human Q8ND25
Background:	In a study identifying genes in rat that are upregulated in response to nerve damage, a gene which is highly expressed in ganglia and in the central nervous system was found. The protein encoded by the rat gene contains both a zinc finger and a RING finger
Synonyms:	NIN283
Note:	Immunogen Sequence Homology: Pig: 100%; Rat: 100%; Human: 100%; Mouse: 100%; Bovine: 100%; Rabbit: 100%; Guinea pig: 100%; Zebrafish: 86%



[View online »](#)

Protein Families: Druggable Genome

Product images:



WB Suggested Anti-ZNRF1 Antibody Titration: 0.2-1 ug/ml; ELISA Titer: 1: 312500; Positive Control: Human Spleen