

Product datasheet for **TA345434**

ZIC4 Rabbit Polyclonal Antibody

Product data:

Product Type:	Primary Antibodies
Applications:	WB
Recommended Dilution:	WB
Reactivity:	Human
Host:	Rabbit
Isotype:	IgG
Clonality:	Polyclonal
Immunogen:	The immunogen for anti-ZIC4 antibody: synthetic peptide directed towards the N terminal of human ZIC4. Synthetic peptide located within the following region: MRYKTSLVMRKRLRLYRNTLKESSSSGHHGPQLTAASSPSVFPGLHEEP
Formulation:	Liquid. Purified antibody supplied in 1x PBS buffer with 0.09% (w/v) sodium azide and 2% sucrose.
Purification:	Affinity Purified
Conjugation:	Unconjugated
Storage:	Store at -20°C as received.
Stability:	Stable for 12 months from date of receipt.
Predicted Protein Size:	36 kDa
Gene Name:	Zic family member 4
Database Link:	NP_115529 Entrez Gene 84107 Human Q8N9L1



[View online »](#)

Background:

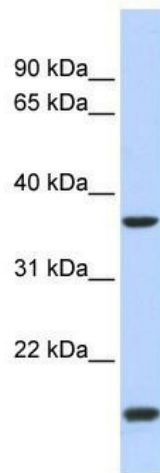
ZIC4 is a member of the ZIC family of C2H2-type zinc finger proteins. Members of this family are important during development, and have been associated with X-linked visceral heterotaxy and holoprosencephaly type 5. This gene is closely linked to the gene encoding zinc finger protein of the cerebellum 1, a related family member on chromosome 3. The specific function of ZIC4 is not yet known. This gene encodes a member of the ZIC family of C2H2-type zinc finger proteins. Members of this family are important during development, and have been associated with X-linked visceral heterotaxy and holoprosencephaly type 5. This gene is closely linked to the gene encoding zinc finger protein of the cerebellum 1, a related family member on chromosome 3. This gene encodes a protein of unknown function.

Synonyms:

FLJ42609; FLJ45833

Note:

Immunogen Sequence Homology: Pig: 100%; Human: 100%; Mouse: 100%; Guinea pig: 100%; Dog: 93%; Horse: 93%; Rabbit: 93%; Bovine: 85%

Product images:

WB Suggested Anti-ZIC4 Antibody Titration: 0.2-1 ug/ml; ELISA Titer: 1: 62500; Positive Control: Human heart