

Product datasheet for **TA345431**

KLF16 Rabbit Polyclonal Antibody

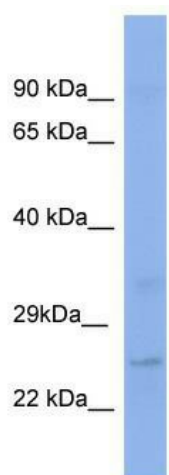
Product data:

Product Type:	Primary Antibodies
Applications:	WB
Recommended Dilution:	WB
Reactivity:	Human
Host:	Rabbit
Isotype:	IgG
Clonality:	Polyclonal
Immunogen:	The immunogen for anti-KLF16 antibody: synthetic peptide directed towards the middle region of human KLF16. Synthetic peptide located within the following region: LAKHARRHPGFHPDLLRRPGARSTSPSDSLPCSLAGSPAPSPAPSPAPAG
Formulation:	Liquid. Purified antibody supplied in 1x PBS buffer with 0.09% (w/v) sodium azide and 2% sucrose.
Purification:	Affinity Purified
Conjugation:	Unconjugated
Storage:	Store at -20°C as received.
Stability:	Stable for 12 months from date of receipt.
Predicted Protein Size:	25 kDa
Gene Name:	Kruppel-like factor 16
Database Link:	NP_114124 Entrez Gene 83855 Human Q9BXX1
Background:	KLF16 is a transcription factor that binds GC and GT boxes and displaces Sp1 and Sp3 from these sequences. KLF16 modulates dopaminergic transmission in the brain.
Synonyms:	BTEB4; DRRF; NSLP2
Note:	Immunogen Sequence Homology: Rat: 100%; Human: 100%; Pig: 93%; Mouse: 93%; Guinea pig: 93%; Bovine: 86%
Protein Families:	Druggable Genome



[View online »](#)

Product images:



WB Suggested Anti-KLF16 Antibody Titration: 0.2-1 ug/ml; ELISA Titer: 1: 62500; Positive Control: PANC1 cell lysate