

## Product datasheet for **TA345429**

### L3MBTL2 Rabbit Polyclonal Antibody

#### Product data:

Product Type:	Primary Antibodies
Applications:	WB
Recommended Dilution:	WB
Reactivity:	Human
Host:	Rabbit
Isotype:	IgG
Clonality:	Polyclonal
Immunogen:	The immunogen for anti-L3MBTL2 antibody: synthetic peptide directed towards the C terminal of human L3MBTL2. Synthetic peptide located within the following region: LLEDDPQGARKISSEPVPGIIVRVKEEHLDVASPKASSPELPSVEN
Formulation:	Liquid. Purified antibody supplied in 1x PBS buffer with 0.09% (w/v) sodium azide and 2% sucrose. <i>Note that this product is shipped as lyophilized powder to China customers.</i>
Purification:	Protein A purified
Conjugation:	Unconjugated
Storage:	Store at -20°C as received.
Stability:	Stable for 12 months from date of receipt.
Predicted Protein Size:	79 kDa
Gene Name:	L3MBTL2 polycomb repressive complex 1 subunit
Database Link:	<a href="#">NP_113676</a> <a href="#">Entrez Gene 83746 Human Q969R5</a>
Background:	L3MBTL2 contains 1 FCS-type zinc finger and 4 MBT repeats. It is putative Polycomb group (PcG) protein. PcG proteins maintain the transcriptionally repressive state of genes, probably via a modification of chromatin, rendering it heritably changed in its expressibility. Its association with a chromatin remodeling complex suggests that it may contribute to prevent expression of genes that trigger the cell into mitosis.
Synonyms:	H-I(3)mbt-l; L3MBT

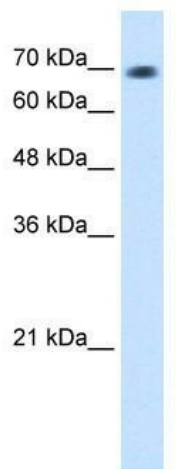


[View online »](#)

**Note:** Immunogen Sequence Homology: Human: 100%; Pig: 92%; Dog: 85%; Horse: 85%; Bovine: 85%

**Protein Families:** Transcription Factors

**Product images:**



WB Suggested Anti-L3MBTL2 Antibody Titration:  
1.25 ug/ml; ELISA Titer: 1: 62500; Positive Control:  
Transfected 293T