

## Product datasheet for **TA345428**

### SOX7 Rabbit Polyclonal Antibody

#### Product data:

Product Type:	Primary Antibodies
Applications:	IHC, WB
Recommended Dilution:	WB, IHC
Reactivity:	Human
Host:	Rabbit
Isotype:	IgG
Clonality:	Polyclonal
Immunogen:	The immunogen for anti-SOX7 antibody: synthetic peptide directed towards the middle region of human SOX7. Synthetic peptide located within the following region: LLGDMDRNEFDQYLNTPGHPDSATGAMALSGHVPVSQVTPTGPTETSLIS
Formulation:	Liquid. Purified antibody supplied in 1x PBS buffer with 0.09% (w/v) sodium azide and 2% sucrose. <i>Note that this product is shipped as lyophilized powder to China customers.</i>
Purification:	Affinity Purified
Conjugation:	Unconjugated
Storage:	Store at -20°C as received.
Stability:	Stable for 12 months from date of receipt.
Predicted Protein Size:	42 kDa
Gene Name:	SRY-box 7
Database Link:	<a href="#">NP_113627</a> <a href="#">Entrez Gene 83595 Human</a> <a href="#">Q9BT81</a>



[View online »](#)

**Background:**

SOX7 is a member of the SOX (SRY-related HMG-box) family of transcription factors involved in the regulation of embryonic development and in the determination of the cell fate. SOX7 may act as a transcriptional regulator after forming a protein complex with other proteins. It may play a role in tumorigenesis. A similar protein in mice is involved in the regulation of the wingless-type MMTV integration site family (Wnt) pathway. This gene encodes a member of the SOX (SRY-related HMG-box) family of transcription factors involved in the regulation of embryonic development and in the determination of the cell fate. The encoded protein may act as a transcriptional regulator after forming a protein complex with other proteins. The protein may play a role in tumorigenesis. A similar protein in mice is involved in the regulation of the wingless-type MMTV integration site family (Wnt) pathway.

**Synonyms:**

MGC10895

**Note:**

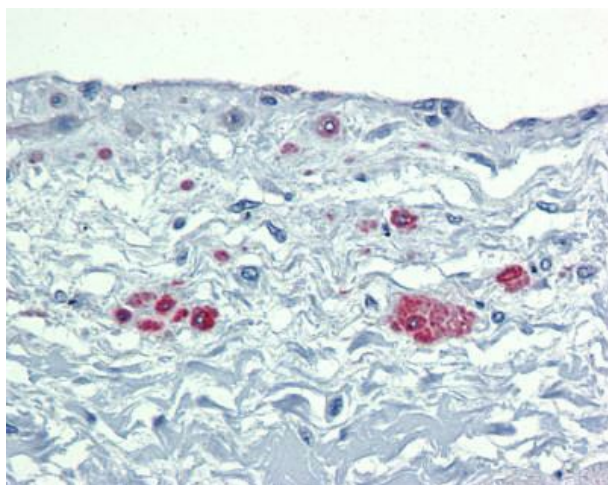
Immunogen Sequence Homology: Dog: 100%; Pig: 100%; Rat: 100%; Human: 100%; Mouse: 100%; Bovine: 100%; Rabbit: 100%; Guinea pig: 100%

**Protein Families:**

ES Cell Differentiation/IPS, Induced pluripotent stem cells, Transcription Factors

**Product images:**

WB Suggested Anti-SOX7 Antibody Titration: 1 ug/ml; Positive Control: Fetal Stomach cell lysate



Immunohistochemistry with Transfected 293T cell lysate tissue at an antibody concentration of 1 g/ml using anti-SOX7 antibody