

## Product datasheet for **TA345426**

### **MAD3 (MXD3) Rabbit Polyclonal Antibody**

#### **Product data:**

<b>Product Type:</b>	Primary Antibodies
<b>Applications:</b>	WB
<b>Recommended Dilution:</b>	WB
<b>Reactivity:</b>	Human
<b>Host:</b>	Rabbit
<b>Isotype:</b>	IgG
<b>Clonality:</b>	Polyclonal
<b>Immunogen:</b>	The immunogen for Anti-MXD3 antibody is: synthetic peptide directed towards the C-terminal region of Human MXD3. Synthetic peptide located within the following region: RLRADSLDSSGLSSERSDSDQEELEVDVESLVFGGEAELLRGRFVAGQEHS
<b>Formulation:</b>	Liquid. Purified antibody supplied in 1x PBS buffer with 0.09% (w/v) sodium azide and 2% sucrose. <i>Note that this product is shipped as lyophilized powder to China customers.</i>
<b>Purification:</b>	Affinity Purified
<b>Conjugation:</b>	Unconjugated
<b>Storage:</b>	Store at -20°C as received.
<b>Stability:</b>	Stable for 12 months from date of receipt.
<b>Predicted Protein Size:</b>	21 kDa
<b>Gene Name:</b>	MAX dimerization protein 3
<b>Database Link:</b>	<a href="#">NP_001136407</a> <a href="#">Entrez Gene 83463 Human</a> <a href="#">Q9BW11</a>
<b>Background:</b>	MXD3 contains 1 basic helix-loop-helix (bHLH) domain. It is a transcriptional repressor and binds with MAX to form a sequence-specific DNA-binding protein complex which recognizes the core sequence 5'-CAC[GA]TG-3'. Antagonizes MYC transcriptional activity by competing for MAX and suppresses MYC dependent cell transformation.
<b>Synonyms:</b>	BHLHC13; MAD3; MYX

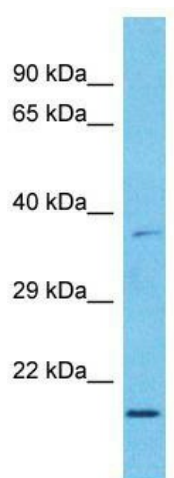


[View online »](#)

**Note:** Immunogen Sequence Homology: Dog: 100%; Pig: 100%; Rat: 100%; Horse: 100%; Human: 100%; Bovine: 100%; Rabbit: 100%; Mouse: 93%; Guinea pig: 91%; Zebrafish: 90%

**Protein Families:** Druggable Genome, Transcription Factors

**Product images:**



Host: Rabbit; Target Name: MXD3; Sample Tissue: Esophagus Tumor lysates; Antibody Dilution: 1.0 ug/ml