

Product datasheet for **TA345425**

MAD3 (MXD3) Rabbit Polyclonal Antibody

Product data:

Product Type:	Primary Antibodies
Applications:	WB
Recommended Dilution:	WB
Reactivity:	Human
Host:	Rabbit
Isotype:	IgG
Clonality:	Polyclonal
Immunogen:	The immunogen for anti-MXD3 antibody: synthetic peptide directed towards the N terminal of human MXD3. Synthetic peptide located within the following region: MEPLASNIQVLLQAAEFLERREREAHGYASLCPHRSPGPIHRRKKRPPQ
Formulation:	Liquid. Purified antibody supplied in 1x PBS buffer with 0.09% (w/v) sodium azide and 2% sucrose. <i>Note that this product is shipped as lyophilized powder to China customers.</i>
Purification:	Affinity Purified
Conjugation:	Unconjugated
Storage:	Store at -20°C as received.
Stability:	Stable for 12 months from date of receipt.
Predicted Protein Size:	23 kDa
Gene Name:	MAX dimerization protein 3
Database Link:	NP_112590 Entrez Gene 83463 Human Q9BW11
Background:	MXD3 contains 1 basic helix-loop-helix (bHLH) domain. It is a transcriptional repressor and binds with MAX to form a sequence-specific DNA-binding protein complex which recognizes the core sequence 5'-CAC[GA]TG-3'. Antagonizes MYC transcriptional activity by competing for MAX and suppresses MYC dependent cell transformation.
Synonyms:	BHLHC13; MAD3; MYX

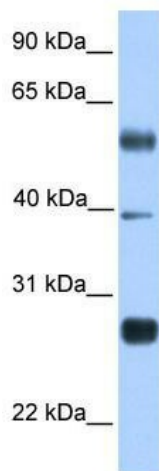


[View online »](#)

Note: Immunogen Sequence Homology: Dog: 100%; Pig: 100%; Rat: 100%; Horse: 100%; Human: 100%; Mouse: 100%; Bovine: 100%; Rabbit: 100%; Zebrafish: 100%; Guinea pig: 100%; Sheep: 93%

Protein Families: Druggable Genome, Transcription Factors

Product images:



WB Suggested Anti-MXD3 Antibody Titration: 0.2-1 ug/ml; ELISA Titer: 1: 62500; Positive Control: Transfected 293T