

Product datasheet for **TA345420**

TRIM56 Rabbit Polyclonal Antibody

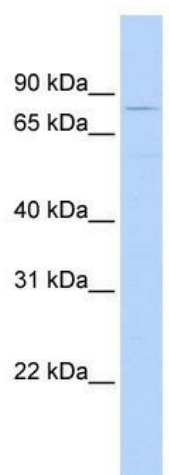
Product data:

Product Type:	Primary Antibodies
Applications:	WB
Recommended Dilution:	WB
Reactivity:	Human
Host:	Rabbit
Isotype:	IgG
Clonality:	Polyclonal
Immunogen:	The immunogen for anti-TRIM56 antibody: synthetic peptide directed towards the middle region of human TRIM56. Synthetic peptide located within the following region: DPKGSLLGDFLTAYHGLEKPRVTTMVDGRYLVVLSLNGTIHIFRVRSPDS
Formulation:	Liquid. Purified antibody supplied in 1x PBS buffer with 0.09% (w/v) sodium azide and 2% sucrose. <i>Note that this product is shipped as lyophilized powder to China customers.</i>
Purification:	Affinity Purified
Conjugation:	Unconjugated
Storage:	Store at -20°C as received.
Stability:	Stable for 12 months from date of receipt.
Predicted Protein Size:	81 kDa
Gene Name:	tripartite motif containing 56
Database Link:	NP_112223 Entrez Gene 81844 Human Q9BRZ2
Background:	TRIM56 belongs to the TRIM/RBCC family. It contains 2 B box-type zinc fingers and 1 RING-type zinc finger. The function of the TRIM56 protein remains unknown.
Synonyms:	RNF109
Note:	Immunogen Sequence Homology: Rat: 100%; Human: 100%; Bovine: 100%; Mouse: 93%



[View online »](#)

Product images:



WB Suggested Anti-TRIM56 Antibody Titration:
0.2-1 ug/ml; ELISA Titer: 1: 312500; Positive
Control: MCF7 cell lysate