

## Product datasheet for **TA345419**

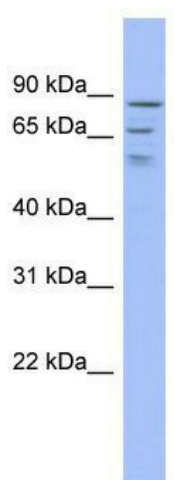
### **C1orf25 (TRMT1L) Rabbit Polyclonal Antibody**

#### **Product data:**

Product Type:	Primary Antibodies
Applications:	WB
Recommended Dilution:	WB
Reactivity:	Human
Host:	Rabbit
Isotype:	IgG
Clonality:	Polyclonal
Immunogen:	The immunogen for anti-C1orf25 antibody: synthetic peptide directed towards the middle region of human C1orf25. Synthetic peptide located within the following region: QFKSILLKYSTPTYTGGQSESHVQSASEDTVTERVEMSVNDKAEASGCRR
Formulation:	Liquid. Purified antibody supplied in 1x PBS buffer with 0.09% (w/v) sodium azide and 2% sucrose. <i>Note that this product is shipped as lyophilized powder to China customers.</i>
Purification:	Affinity Purified
Conjugation:	Unconjugated
Storage:	Store at -20°C as received.
Stability:	Stable for 12 months from date of receipt.
Predicted Protein Size:	82 kDa
Gene Name:	tRNA methyltransferase 1 like
Database Link:	<a href="#">NP_112196</a> <a href="#">Entrez Gene 81627 Human</a> <a href="#">Q7Z2T5</a>
Background:	Although C1orf25 is similar to N2,N2-dimethylguanosine tRNA methyltransferase from other organisms, the true function of C1orf25 protein is not known.
Synonyms:	bG120K12.3; C1orf25; MST070; MSTP070; TRM1L
Note:	Immunogen Sequence Homology: Human: 100%; Dog: 93%; Pig: 93%; Rat: 93%; Guinea pig: 93%; Horse: 86%; Bovine: 86%



[View online »](#)

**Product images:**


WB Suggested Anti-C1orf25 Antibody Titration:  
 0.2-1 ug/ml; ELISA Titer: 1: 62500; Positive  
 Control: ACHN cell lysate; TRMT1L is supported  
 by BioGPS gene expression data to be expressed  
 in ACHN