

Product datasheet for **TA345418**

GERP (TRIM8) Rabbit Polyclonal Antibody

Product data:

Product Type:	Primary Antibodies
Applications:	IHC, WB
Recommended Dilution:	WB, IHC
Reactivity:	Human
Host:	Rabbit
Isotype:	IgG
Clonality:	Polyclonal
Immunogen:	The immunogen for anti-TRIM8 antibody: synthetic peptide directed towards the N terminal of human TRIM8. Synthetic peptide located within the following region: RGCIGEAWAKDSGLVRCPECNQAYNQKPGLEKNLKLTNIVEKFNALHVEK
Formulation:	Liquid. Purified antibody supplied in 1x PBS buffer with 0.09% (w/v) sodium azide and 2% sucrose. <i>Note that this product is shipped as lyophilized powder to China customers.</i>
Purification:	Affinity Purified
Conjugation:	Unconjugated
Storage:	Store at -20°C as received.
Stability:	Stable for 12 months from date of receipt.
Predicted Protein Size:	61 kDa
Gene Name:	tripartite motif containing 8
Database Link:	NP_112174 Entrez Gene 81603 Human Q9BZR9



[View online »](#)

Background:

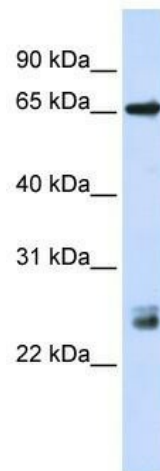
TRIM8 is a member of the tripartite motif (TRIM) family. The TRIM motif includes three zinc-binding domains, a RING, a B-box type 1 and a B-box type 2, and a coiled-coil region. This protein localizes to nuclear bodies. Its structure is similar to some tumor suppressor proteins and its gene maps to a locus thought to contain tumor suppressor genes. The protein encoded by this gene is a member of the tripartite motif (TRIM) family. The TRIM motif includes three zinc-binding domains, a RING, a B-box type 1 and a B-box type 2, and a coiled-coil region. This protein localizes to nuclear bodies. Its structure is similar to some tumor suppressor proteins and its gene maps to a locus thought to contain tumor suppressor genes.

Synonyms:

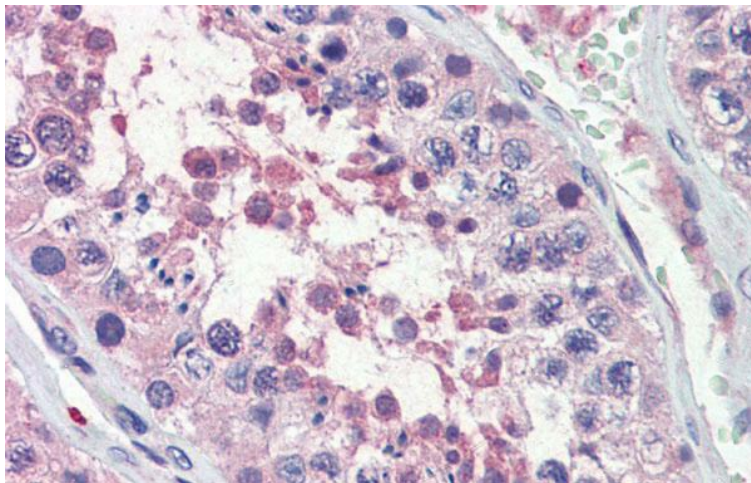
GERP; RNF27

Note:

Immunogen Sequence Homology: Dog: 100%; Pig: 100%; Rat: 100%; Human: 100%; Mouse: 100%; Bovine: 100%; Rabbit: 100%; Horse: 93%; Zebrafish: 79%

Product images:

WB Suggested Anti-TRIM8 Antibody Titration: 0.2-1 ug/ml; ELISA Titer: 1: 62500; Positive Control: HeLa cell lysate



Immunohistochemistry with Human Testis lysate tissue at an antibody concentration of 5.0 ug/ml using anti-TRIM8 antibody