

Product datasheet for **TA345417**

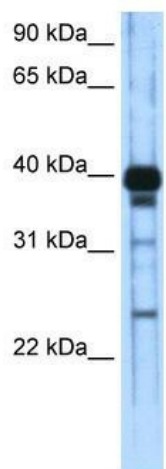
ZSCAN16 Rabbit Polyclonal Antibody

Product data:

Product Type:	Primary Antibodies
Applications:	WB
Recommended Dilution:	WB
Reactivity:	Human
Host:	Rabbit
Isotype:	IgG
Clonality:	Polyclonal
Immunogen:	The immunogen for anti-ZSCAN16 antibody: synthetic peptide directed towards the C terminal of human ZSCAN16. Synthetic peptide located within the following region: KDFSGRTGLIQHQRIHTGEKPYECDECGRPFVRVSSALIRHQRIHTANKLY
Formulation:	Liquid. Purified antibody supplied in 1x PBS buffer with 0.09% (w/v) sodium azide and 2% sucrose.
Purification:	Affinity Purified
Conjugation:	Unconjugated
Storage:	Store at -20°C as received.
Stability:	Stable for 12 months from date of receipt.
Predicted Protein Size:	41 kDa
Gene Name:	zinc finger and SCAN domain containing 16
Database Link:	NP_079507 Entrez Gene 80345 Human Q9H4T2
Background:	ZSCAN16 may be involved in transcriptional regulation.
Synonyms:	dj265C24.3; ZNF392; ZNF435
Note:	Immunogen Sequence Homology: Dog: 100%; Pig: 100%; Horse: 100%; Human: 100%; Bovine: 100%; Rabbit: 86%; Rat: 79%; Goat: 79%; Mouse: 79%; Guinea pig: 79%
Protein Families:	Transcription Factors



[View online »](#)

Product images:

WB Suggested Anti-ZSCAN16 Antibody Titration:
0.2-1 ug/ml; ELISA Titer: 1: 62500; Positive
Control: Transfected 293T