

Product datasheet for **TA345416**

ZSCAN16 Rabbit Polyclonal Antibody

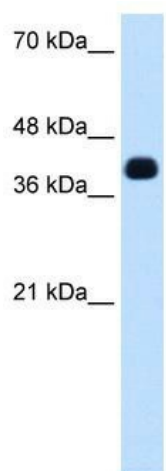
Product data:

Product Type:	Primary Antibodies
Applications:	WB
Recommended Dilution:	WB
Reactivity:	Human
Host:	Rabbit
Isotype:	IgG
Clonality:	Polyclonal
Immunogen:	The immunogen for anti-ZSCAN16 antibody: synthetic peptide directed towards the N terminal of human ZSCAN16. Synthetic peptide located within the following region: MTTALEPEDQKGLLIKAEDHYWGQDSSSQKCSPHRRELYRQHFRKLCYQ
Formulation:	Liquid. Purified antibody supplied in 1x PBS buffer with 0.09% (w/v) sodium azide and 2% sucrose.
Purification:	Affinity Purified
Conjugation:	Unconjugated
Storage:	Store at -20°C as received.
Stability:	Stable for 12 months from date of receipt.
Predicted Protein Size:	41 kDa
Gene Name:	zinc finger and SCAN domain containing 16
Database Link:	NP_079507 Entrez Gene 80345 Human Q9H4T2
Background:	ZSCAN16 may be involved in transcriptional regulation.
Synonyms:	dj265C24.3; ZNF392; ZNF435
Note:	Immunogen Sequence Homology: Human: 100%; Dog: 93%; Pig: 93%; Horse: 93%; Bovine: 93%
Protein Families:	Transcription Factors



[View online »](#)

Product images:



WB Suggested Anti-ZSCAN16 Antibody Titration:
0.625 ug/ml; ELISA Titer: 1: 62500; Positive
Control: Transfected 293T