

## Product datasheet for **TA345411**

### PARIS (ZNF746) Rabbit Polyclonal Antibody

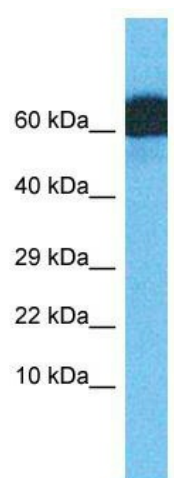
#### Product data:

Product Type:	Primary Antibodies
Applications:	WB
Recommended Dilution:	WB
Reactivity:	Human
Host:	Rabbit
Isotype:	IgG
Clonality:	Polyclonal
Immunogen:	The immunogen for Anti-ZNF746 antibody is: synthetic peptide directed towards the N-terminal region of Human ZNF746. Synthetic peptide located within the following region: PWTMAATIQAMERKIESQAARLLSLEGRTGMAEKKLADCEKTAVEFGNQL
Formulation:	Liquid. Purified antibody supplied in 1x PBS buffer with 0.09% (w/v) sodium azide and 2% sucrose. <i>Note that this product is shipped as lyophilized powder to China customers.</i>
Purification:	Affinity Purified
Conjugation:	Unconjugated
Storage:	Store at -20°C as received.
Stability:	Stable for 12 months from date of receipt.
Predicted Protein Size:	70 kDa
Gene Name:	zinc finger protein 746
Database Link:	<a href="#">NP_001156946</a> <a href="#">Entrez Gene 155061 Human</a> <a href="#">Q6NUN9</a>
Background:	ZNF746 may be involved in transcriptional regulation.
Synonyms:	PARIS
Note:	Immunogen Sequence Homology: Human: 100%; Dog: 93%; Pig: 93%; Rat: 93%; Horse: 93%; Mouse: 93%; Bovine: 93%; Rabbit: 93%; Guinea pig: 93%



[View online »](#)

## Product images:



Host: Rabbit; Target Name: ZNF746; Sample  
Tissue: Lymph Node Tumor lysates; Antibody  
Dilution: 1.0 ug/ml