

Product datasheet for **TA345404**

CBL1 Rabbit Polyclonal Antibody

Product data:

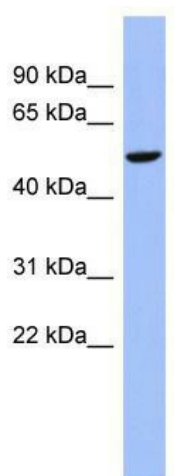
Product Type:	Primary Antibodies
Applications:	WB
Recommended Dilution:	WB
Reactivity:	Human
Host:	Rabbit
Isotype:	IgG
Clonality:	Polyclonal
Immunogen:	The immunogen for anti-CBL1 antibody: synthetic peptide directed towards the N terminal of human CBL1. Synthetic peptide located within the following region: MDHTDNELQGTNSSGSLGGLDVRRRIPIKLISKQANKAKPAPRTQRTINR
Formulation:	Liquid. Purified antibody supplied in 1x PBS buffer with 0.09% (w/v) sodium azide and 2% sucrose. <i>Note that this product is shipped as lyophilized powder to China customers.</i>
Purification:	Affinity Purified
Conjugation:	Unconjugated
Storage:	Store at -20°C as received.
Stability:	Stable for 12 months from date of receipt.
Predicted Protein Size:	54 kDa
Gene Name:	Cbl proto-oncogene like 1
Database Link:	NP_079090 Entrez Gene 79872 Human Q75N03
Background:	Epithelial cell cadherin is endocytosed as a consequence of tyrosine phosphorylation and ubiquitination. CBL1 is an E3 ubiquitin ligase that mediates ubiquitination of the CDH1 complex. Epithelial cell cadherin (CDH1; MIM 192090) is endocytosed as a conse
Synonyms:	HAKAI; RNF188
Note:	Immunogen Sequence Homology: Human: 100%; Rabbit: 100%; Pig: 93%; Rat: 93%; Guinea pig: 93%; Mouse: 86%



[View online »](#)

Protein Families: Druggable Genome

Product images:



WB Suggested Anti-CBLL1 Antibody Titration: 0.2-1 ug/ml; ELISA Titer: 1: 12500; Positive Control: COLO205 cell lysate