

Product datasheet for **TA345403**

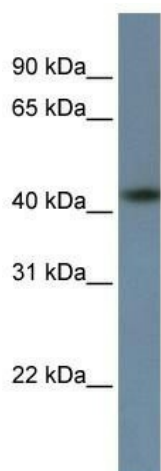
ZNF669 Rabbit Polyclonal Antibody

Product data:

Product Type:	Primary Antibodies
Applications:	WB
Recommended Dilution:	WB
Reactivity:	Human
Host:	Rabbit
Isotype:	IgG
Clonality:	Polyclonal
Immunogen:	The immunogen for anti-ZNF669 antibody: synthetic peptide directed towards the C terminal of human ZNF669. Synthetic peptide located within the following region: AFSRLSSLHLHERIHTGEKPYECKKCGKAYTRSSHLTRHERSHDIEAGCS
Formulation:	Liquid. Purified antibody supplied in 1x PBS buffer with 0.09% (w/v) sodium azide and 2% sucrose.
Purification:	Affinity Purified
Conjugation:	Unconjugated
Storage:	Store at -20°C as received.
Stability:	Stable for 12 months from date of receipt.
Predicted Protein Size:	52 kDa
Gene Name:	zinc finger protein 669
Database Link:	NP_079080 Entrez Gene 79862 Human Q96BR6
Background:	ZNF669 belongs to the krueppel C2H2-type zinc-finger protein family. It contains 9 C2H2-type zinc fingers and 1 KRAB domain. ZNF669 may be involved in transcriptional regulation.
Synonyms:	FLJ12606
Note:	Immunogen Sequence Homology: Rat: 100%; Human: 100%; Yeast: 100%; Mouse: 91%; Bovine: 90%; Zebrafish: 83%; Pig: 75%
Protein Families:	Transcription Factors



[View online »](#)

Product images:

WB Suggested Anti-ZNF669 Antibody Titration:
0.2-1 ug/ml; ELISA Titer: 1: 312500; Positive
Control: HepG2 cell lysate