

Product datasheet for **TA345401**

ZBTB3 Rabbit Polyclonal Antibody

Product data:

Product Type:	Primary Antibodies
Applications:	WB
Recommended Dilution:	WB
Reactivity:	Human
Host:	Rabbit
Isotype:	IgG
Clonality:	Polyclonal
Immunogen:	The immunogen for anti-ZBTB3 antibody: synthetic peptide directed towards the middle region of human ZBTB3. Synthetic peptide located within the following region: EDLAKRSKPDPEVGPLLGVQPLPGSPTADRQSSSGGGPPKDFVLAPKTN
Formulation:	Liquid. Purified antibody supplied in 1x PBS buffer with 0.09% (w/v) sodium azide and 2% sucrose. <i>Note that this product is shipped as lyophilized powder to China customers.</i>
Purification:	Affinity Purified
Conjugation:	Unconjugated
Storage:	Store at -20°C as received.
Stability:	Stable for 12 months from date of receipt.
Predicted Protein Size:	62 kDa
Gene Name:	zinc finger and BTB domain containing 3
Database Link:	NP_079060 Entrez Gene 79842 Human
Background:	ZBTB3 contains 2 C2H2-type zinc fingers and 1 BTB (POZ) domain. It may be involved in transcriptional regulation.
Synonyms:	FLJ23392
Note:	Immunogen Sequence Homology: Human: 100%; Rabbit: 100%; Bovine: 93%
Protein Families:	Transcription Factors



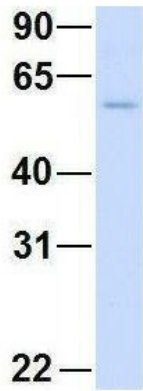
[View online »](#)

Product images:



WB Suggested Anti-ZBTB3 Antibody Titration: 0.2-1 ug/ml; ELISA Titer: 1: 62500; Positive Control: Hela cell lysate

ZBTB3



Rabbit Anti-ZBTB3
 Sample Type: Human Adult Placenta
 Antibody Concentration: 1ug/mL

Hum. Adult Placenta; Host: Rabbit; Target Name: CHAD; Sample Tissue: Human Adult Placenta; Antibody Dilution: 1.0 ug/ml