

## Product datasheet for **TA345400**

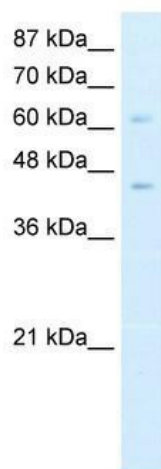
### ZBTB3 Rabbit Polyclonal Antibody

#### Product data:

|                         |                                                                                                                                                                                                                        |
|-------------------------|------------------------------------------------------------------------------------------------------------------------------------------------------------------------------------------------------------------------|
| Product Type:           | Primary Antibodies                                                                                                                                                                                                     |
| Applications:           | WB                                                                                                                                                                                                                     |
| Recommended Dilution:   | WB                                                                                                                                                                                                                     |
| Reactivity:             | Human                                                                                                                                                                                                                  |
| Host:                   | Rabbit                                                                                                                                                                                                                 |
| Isotype:                | IgG                                                                                                                                                                                                                    |
| Clonality:              | Polyclonal                                                                                                                                                                                                             |
| Immunogen:              | The immunogen for anti-ZBTB3 antibody: synthetic peptide directed towards the N terminal of human ZBTB3. Synthetic peptide located within the following region:<br>MLREFSKWGV EASPGKAWERKRSLLRGAVGRYRGATGGDLFWAPFPSWGT |
| Formulation:            | Liquid. Purified antibody supplied in 1x PBS buffer with 0.09% (w/v) sodium azide and 2% sucrose.<br><i>Note that this product is shipped as lyophilized powder to China customers.</i>                                |
| Purification:           | Affinity Purified                                                                                                                                                                                                      |
| Conjugation:            | Unconjugated                                                                                                                                                                                                           |
| Storage:                | Store at -20°C as received.                                                                                                                                                                                            |
| Stability:              | Stable for 12 months from date of receipt.                                                                                                                                                                             |
| Predicted Protein Size: | 62 kDa                                                                                                                                                                                                                 |
| Gene Name:              | zinc finger and BTB domain containing 3                                                                                                                                                                                |
| Database Link:          | <a href="#">NP_079060</a><br><a href="#">Entrez Gene 79842 Human</a>                                                                                                                                                   |
| Background:             | ZBTB3 contains 2 C2H2-type zinc fingers and 1 BTB (POZ) domain. It may be involved in transcriptional regulation                                                                                                       |
| Synonyms:               | FLJ23392                                                                                                                                                                                                               |
| Note:                   | Immunogen Sequence Homology: Human: 100%; Rabbit: 92%; Pig: 91%                                                                                                                                                        |
| Protein Families:       | Transcription Factors                                                                                                                                                                                                  |



[View online »](#)

**Product images:**

WB Suggested Anti-ZBTB3 Antibody Titration: 0.2-1 ug/ml; ELISA Titer: 1: 12500; Positive Control: HepG2 cell lysate; ZBTB3 is supported by BioGPS gene expression data to be expressed in HepG2