

## Product datasheet for **TA345399**

### ZNF408 Rabbit Polyclonal Antibody

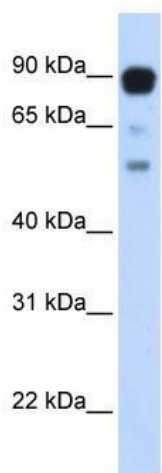
#### Product data:

Product Type:	Primary Antibodies
Applications:	WB
Recommended Dilution:	WB
Reactivity:	Human
Host:	Rabbit
Isotype:	IgG
Clonality:	Polyclonal
Immunogen:	The immunogen for anti-ZNF408 antibody: synthetic peptide directed towards the middle region of human ZNF408. Synthetic peptide located within the following region: TVLLQAEPQLLDTHREEEVSPARDVVEVTISESQEKCFVPEEPDAAPS
Formulation:	Liquid. Purified antibody supplied in 1x PBS buffer with 0.09% (w/v) sodium azide and 2% sucrose. <i>Note that this product is shipped as lyophilized powder to China customers.</i>
Purification:	Affinity Purified
Conjugation:	Unconjugated
Storage:	Store at -20°C as received.
Stability:	Stable for 12 months from date of receipt.
Predicted Protein Size:	78 kDa
Gene Name:	zinc finger protein 408
Database Link:	<a href="#">NP_079017</a> <a href="#">Entrez Gene 79797 Human</a> <a href="#">Q9H9D4</a>
Background:	The exact function of this protein remains unknown.
Synonyms:	FLJ12827
Note:	Immunogen Sequence Homology: Human: 100%; Rabbit: 90%
Protein Families:	Transcription Factors



[View online »](#)

## Product images:



WB Suggested Anti-ZNF408 Antibody Titration:  
0.2-1 ug/ml; ELISA Titer: 1: 12500; Positive  
Control: Transfected 293T