

Product datasheet for **TA345397**

Zinc finger protein 668 (ZNF668) Rabbit Polyclonal Antibody

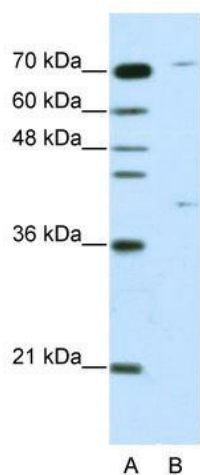
Product data:

Product Type:	Primary Antibodies
Applications:	WB
Recommended Dilution:	WB
Reactivity:	Human
Host:	Rabbit
Isotype:	IgG
Clonality:	Polyclonal
Immunogen:	The immunogen for anti-ZNF668 antibody: synthetic peptide directed towards the C terminal of human ZNF668. Synthetic peptide located within the following region: KSFSDRAGLRKHSRTHSSVRPYTCPFKAFSLASDLRKHHERTHPVMGT
Formulation:	Liquid. Purified antibody supplied in 1x PBS buffer with 0.09% (w/v) sodium azide and 2% sucrose.
Purification:	Affinity Purified
Conjugation:	Unconjugated
Storage:	Store at -20°C as received.
Stability:	Stable for 12 months from date of receipt.
Predicted Protein Size:	68 kDa
Gene Name:	zinc finger protein 668
Database Link:	NP_078982 Entrez Gene 79759 Human Q96K58
Background:	ZNF668 is a new candidate transcription factor.
Synonyms:	FLJ13479; FLJ14492
Note:	Immunogen Sequence Homology: Dog: 100%; Pig: 100%; Rat: 100%; Horse: 100%; Human: 100%; Mouse: 100%; Bovine: 100%; Zebrafish: 100%; Guinea pig: 100%; Yeast: 90%



[View online »](#)

Product images:



WB Suggested Anti-ZNF668 Antibody Titration:
1.25 ug/ml; ELISA Titer: 1: 62500; Positive Control:
HepG2 cell lysate