

Product datasheet for **TA345396**

ZNF750 Rabbit Polyclonal Antibody

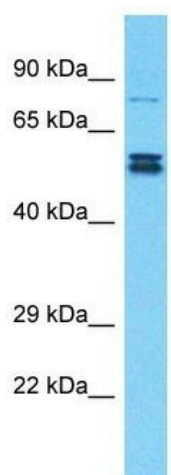
Product data:

Product Type:	Primary Antibodies
Applications:	WB
Recommended Dilution:	WB
Reactivity:	Human
Host:	Rabbit
Isotype:	IgG
Clonality:	Polyclonal
Immunogen:	The immunogen for Anti-ZNF750 antibody is: synthetic peptide directed towards the N-terminal region of Human ZNF750. Synthetic peptide located within the following region: MSLLKERKPKKPHYIPRPPGKPFKYKCFQCPFTCNESHFLFNHMKYGLCK
Formulation:	Liquid. Purified antibody supplied in 1x PBS buffer with 0.09% (w/v) sodium azide and 2% sucrose. <i>Note that this product is shipped as lyophilized powder to China customers.</i>
Purification:	Affinity Purified
Conjugation:	Unconjugated
Storage:	Store at -20°C as received.
Stability:	Stable for 12 months from date of receipt.
Predicted Protein Size:	77 kDa
Gene Name:	zinc finger protein 750
Database Link:	NP_078978 Entrez Gene 79755 Human Q32MQ0
Background:	This gene encodes a protein with a nuclear localization site and a C2H2 zinc finger domain. Mutations in this gene have been associated with seborrhea-like dermatitis with psoriasiform elements.
Synonyms:	ZFP750
Note:	Immunogen Sequence Homology: Dog: 100%; Pig: 100%; Rat: 100%; Horse: 100%; Human: 100%; Mouse: 100%; Bovine: 100%; Rabbit: 100%; Zebrafish: 100%; Guinea pig: 100%



[View online »](#)

Product images:



Host: Rabbit

Target Name: ZNF750

Sample Tissue: Lymph Node Tumor Lysate

Antibody Dilution: 1.0 µg/ml

Host: Rabbit; Target Name: ZNF750; Sample Tissue: Lymph Node Tumor lysates; Antibody Dilution: 1.0 µg/ml