

Product datasheet for **TA345390**

HSPBAP1 Rabbit Polyclonal Antibody

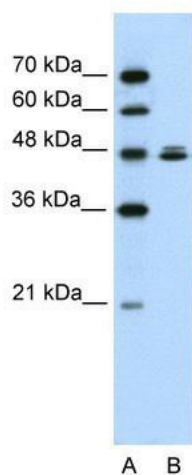
Product data:

Product Type:	Primary Antibodies
Applications:	IHC, WB
Recommended Dilution:	WB, IHC
Reactivity:	Human
Host:	Rabbit
Isotype:	IgG
Clonality:	Polyclonal
Immunogen:	The immunogen for anti-HSPBAP1 antibody: synthetic peptide directed towards the C terminal of human HSPBAP1. Synthetic peptide located within the following region: SDGKDFVDKDGEGHFGKLHCAKRQQIMSNSENAIEEQIASNTTTPQTFIS
Formulation:	Liquid. Purified antibody supplied in 1x PBS buffer with 0.09% (w/v) sodium azide and 2% sucrose.
Purification:	Affinity Purified
Conjugation:	Unconjugated
Storage:	Store at -20°C as received.
Stability:	Stable for 12 months from date of receipt.
Predicted Protein Size:	55 kDa
Gene Name:	HSPB1 associated protein 1
Database Link:	NP_078886 Entrez Gene 79663 Human Q96EW2
Background:	HSPBAP1 may play a role in cellular stress response.
Synonyms:	PASS1
Note:	Immunogen Sequence Homology: Human: 100%

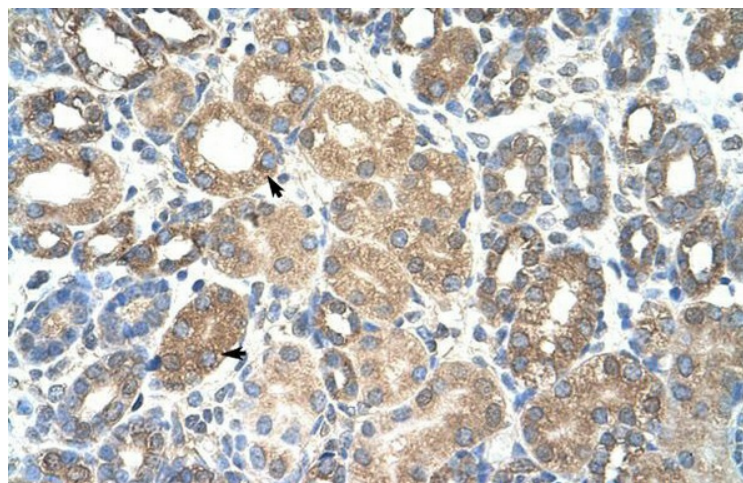


[View online »](#)

Product images:



WB Suggested Anti-HSPBAP1 Antibody Titration: 0.2-1 ug/ml; Positive Control: Jurkat cell lysate



Human kidney