

Product datasheet for **TA345388**

HMBOX1 Rabbit Polyclonal Antibody

Product data:

Product Type:	Primary Antibodies
Applications:	WB
Recommended Dilution:	WB
Reactivity:	Human, Mouse
Host:	Rabbit
Isotype:	IgG
Clonality:	Polyclonal
Immunogen:	The immunogen for anti-HMBOX1 antibody: synthetic peptide directed towards the N terminal of human HMBOX1. Synthetic peptide located within the following region: ETMSHYTDEPRFTIEQIDLLQRLRRTGMTKHEILHALETLDRLDQEHS DK
Formulation:	Liquid. Purified antibody supplied in 1x PBS buffer with 0.09% (w/v) sodium azide and 2% sucrose. <i>Note that this product is shipped as lyophilized powder to China customers.</i>
Purification:	Protein A purified
Conjugation:	Unconjugated
Storage:	Store at -20°C as received.
Stability:	Stable for 12 months from date of receipt.
Predicted Protein Size:	47 kDa
Gene Name:	homeobox containing 1
Database Link:	NP_078843 Entrez Gene 219150 Mouse Entrez Gene 79618 Human Q6NT76



[View online »](#)

Background:

HMBOX1 is located at the boundary of 8p12.3 and 8p21.1. HMBOX1 proteins are highly conserved in human, mouse, rat, chicken and *Xenopus laevis*. Functional HMBOX1::EGFP (enhanced green fluorescent protein) fusion protein revealed that HMBOX1 accumulated more in cytoplasm than in nucleus. HMBOX1 is a transcription repressor. Human HMBOX1 is widely expressed in 18 tissues, and it is highly expressed in pancreas. *Hmbox1* is widely expressed in mouse pancreas and the expression of this gene can also be detected in pallium, hippocampus and hypothalamus.

Synonyms:

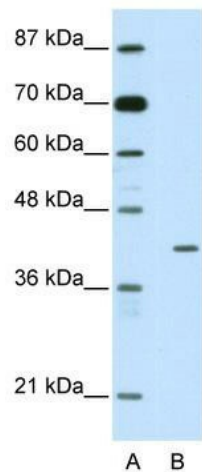
HNH1LA; HOT1; PBHNF

Note:

Immunogen Sequence Homology: Dog: 100%; Pig: 100%; Rat: 100%; Horse: 100%; Human: 100%; Mouse: 100%; Bovine: 100%; Rabbit: 100%; Guinea pig: 100%; Zebrafish: 85%

Protein Families:

Transcription Factors

Product images:

WB Suggested Anti-HMBOX1 Antibody Titration:
2.5 ug/ml; ELISA Titer: 1: 312500; Positive Control:
Jurkat cell lysate