

Product datasheet for **TA345387**

LASS4 (CERS4) Rabbit Polyclonal Antibody

Product data:

Product Type:	Primary Antibodies
Applications:	WB
Recommended Dilution:	WB
Reactivity:	Human
Host:	Rabbit
Isotype:	IgG
Clonality:	Polyclonal
Immunogen:	The immunogen for anti-LASS4 antibody: synthetic peptide directed towards the N terminal of human LASS4. Synthetic peptide located within the following region: MLSSFNEFWQDRFWLPPNVTWTELEDRDGRVYPHPQDLLAALPLALVLL
Formulation:	Liquid. Purified antibody supplied in 1x PBS buffer with 0.09% (w/v) sodium azide and 2% sucrose. <i>Note that this product is shipped as lyophilized powder to China customers.</i>
Purification:	Affinity Purified
Conjugation:	Unconjugated
Storage:	Store at -20°C as received.
Stability:	Stable for 12 months from date of receipt.
Predicted Protein Size:	46 kDa
Gene Name:	ceramide synthase 4
Database Link:	NP_078828 Entrez Gene 79603 Human Q9HA82
Background:	LASS4 may be either a bona fide (dihydro)ceramide synthase or a modulator of its activity. When overexpressed in cells it is involved in the production of sphingolipids containing different fatty acid donors (N-linked stearoyl- (C18) or arachidoyl- (C20) ceramides) in a fumonisin B1-independent manner.
Synonyms:	LASS4; Trh1

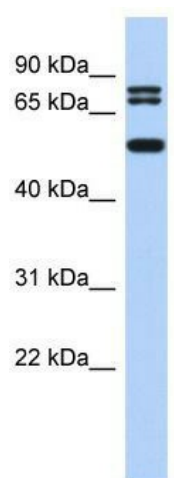


[View online »](#)

Note: Immunogen Sequence Homology: Human: 100%; Mouse: 93%; Pig: 86%; Rat: 86%; Dog: 79%; Horse: 79%

Protein Families: Transcription Factors, Transmembrane

Product images:



WB Suggested Anti-LASS4 Antibody Titration: 0.2-1 ug/ml; ELISA Titer: 1: 312500; Positive Control: SH-SY5Y cell lysate