

Product datasheet for **TA345381**

Neurogenin 2 (NEUROG2) Rabbit Polyclonal Antibody

Product data:

Product Type:	Primary Antibodies
Applications:	WB
Recommended Dilution:	WB
Reactivity:	Human
Host:	Rabbit
Isotype:	IgG
Clonality:	Polyclonal
Immunogen:	The immunogen for anti-NEUROG2 antibody: synthetic peptide directed towards the N terminal of human NEUROG2. Synthetic peptide located within the following region: SSADEEEEEEPGASGGARRQRGAEGAGQGARGGVAAGAEGCRPARLLGLVH
Formulation:	Liquid. Purified antibody supplied in 1x PBS buffer with 0.09% (w/v) sodium azide and 2% sucrose. <i>Note that this product is shipped as lyophilized powder to China customers.</i>
Purification:	Affinity Purified
Conjugation:	Unconjugated
Storage:	Store at -20°C as received.
Stability:	Stable for 12 months from date of receipt.
Predicted Protein Size:	28 kDa
Gene Name:	neurogenin 2
Database Link:	NP_076924 Entrez Gene 63973 Human Q9H2A3
Background:	Neurogenin-2 is a member of the neurogenin subfamily of basic helix-loop-helix (bHLH) transcription factor genes that play an important role in neurogenesis from migratory neural crest cells. Neurogenin-2 is a member of the neurogenin subfamily of basic helix-loop-helix (bHLH) transcription factor genes that play an important role in neurogenesis from migratory neural crest cells. [supplied by OMIM]
Synonyms:	Atoh4; bHLHa8; Math4A; ngn-2; NGN2

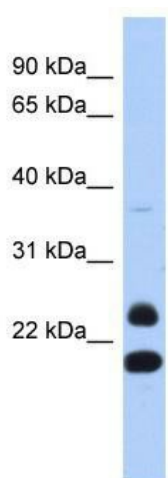


[View online »](#)

Note: Immunogen Sequence Homology: Human: 100%; Dog: 86%; Bovine: 86%; Rabbit: 86%

Protein Families: Transcription Factors

Product images:



WB Suggested Anti-NEUROG2 Antibody Titration:
0.2-1 ug/ml; ELISA Titer: 1: 312500; Positive
Control: Human Thymus