

## Product datasheet for **TA345374**

### EBF1 Rabbit Polyclonal Antibody

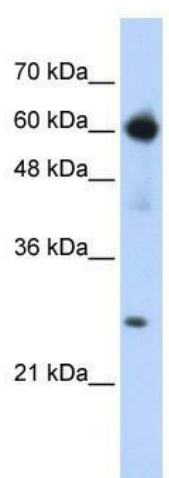
#### Product data:

Product Type:	Primary Antibodies
Applications:	IHC, WB
Recommended Dilution:	WB, IHC
Reactivity:	Human
Host:	Rabbit
Isotype:	IgG
Clonality:	Polyclonal
Immunogen:	The immunogen for anti-EBF1 antibody: synthetic peptide directed towards (50ug) human EBF1.. Synthetic peptide located within the following region: LPSNCSSSSGIFSFSPANMVS AVKQKSAFAPVVRPQTSPPTCTSTNGNS
Formulation:	Liquid. Purified antibody supplied in 1x PBS buffer with 0.09% (w/v) sodium azide and 2% sucrose. <i>Note that this product is shipped as lyophilized powder to China customers.</i>
Purification:	Affinity Purified
Conjugation:	Unconjugated
Storage:	Store at -20°C as received.
Stability:	Stable for 12 months from date of receipt.
Predicted Protein Size:	64 kDa
Gene Name:	early B-cell factor 1
Database Link:	<a href="#">NP_001277289</a> <a href="#">Entrez Gene 1879 Human</a> <a href="#">Q9UH73</a>
Synonyms:	COE1; E-1; EBF; O; OLF1
Note:	Immunogen Sequence Homology: Dog: 100%; Pig: 100%; Rat: 100%; Horse: 100%; Human: 100%; Mouse: 100%; Bovine: 100%; Rabbit: 100%; Zebrafish: 100%; Guinea pig: 100%
Protein Families:	Transcription Factors

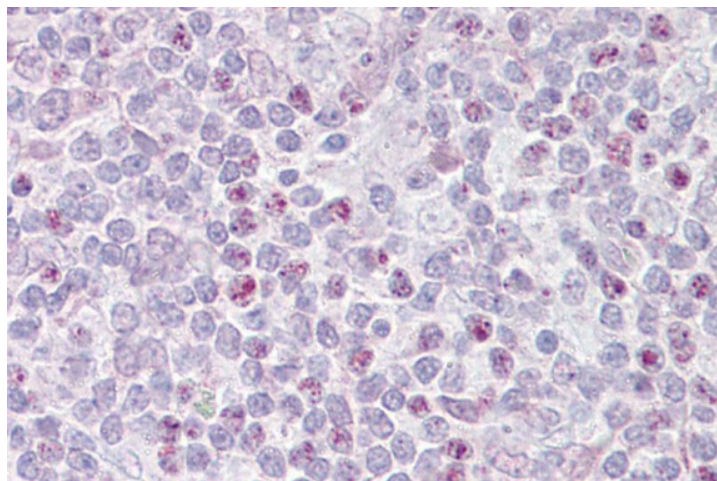


[View online »](#)

## Product images:



WB Suggested Anti-EBF1 Antibody Titration: 0.2-1 ug/ml; ELISA Titer: 1: 312500; Positive Control: Transfected 293T



Immunohistochemistry with Thymus tissue at an antibody concentration of 5 ug/ml using anti-EBF1 antibody