

## Product datasheet for **TA345367**

### Tut1 Rabbit Polyclonal Antibody

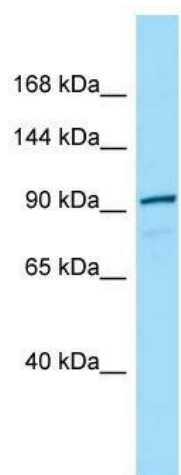
#### Product data:

|                         |  |
|-------------------------|--|
| Product Type:           | Primary Antibodies   |
| Applications:           | WB   |
| Recommended Dilution:   | WB   |
| Reactivity:             | Rat  |
| Host:                   | Rabbit   |
| Isotype:                | IgG  |
| Clonality:              | Polyclonal   |
| Immunogen:              | The immunogen for Anti-Tut1 antibody is: synthetic peptide directed towards the N-terminal region of Rat Tut1. Synthetic peptide located within the following region:<br>MAAVDSDVVSLPRGRFRCLCDVTTANRPSLDAHLKGRKHRDLVQLRATR |
| Formulation:            | Liquid. Purified antibody supplied in 1x PBS buffer with 0.09% (w/v) sodium azide and 2% sucrose.<br><i>Note that this product is shipped as lyophilized powder to China customers.</i>                                    |
| Purification:           | Affinity Purified  |
| Conjugation:            | Unconjugated   |
| Storage:                | Store at -20°C as received.  |
| Stability:              | Stable for 12 months from date of receipt.   |
| Predicted Protein Size: | 95 kDa   |
| Gene Name:              | terminal uridylyl transferase 1, U6 snRNA-specific   |
| Database Link:          | <a href="#">NP_001029073</a><br><a href="#">Entrez Gene 499314 Rat</a><br><a href="#">Q3MHT4</a>   |
| Background:             | The function of this protein remains unknown.  |
| Synonyms:               | FLJ21850; FLJ22267; FLJ22347; MGC131987; MGC149809; PAPD2; RBM21; STARPAP; TUTase; U6-TUTase   |
| Note:                   | Immunogen Sequence Homology: Dog: 100%; Pig: 100%; Rat: 100%; Human: 100%; Guinea pig: 100%; Horse: 93%; Mouse: 93%; Bovine: 93%; Rabbit: 92%  |



[View online »](#)

Product images:



Host: Rabbit; Target Name: Tut1; Sample Tissue: Rat Thymus lysates; Antibody Dilution: 1.0 ug/ml