

Product datasheet for **TA345366**

PER2 Rabbit Polyclonal Antibody

Product data:

Product Type:	Primary Antibodies
Applications:	WB
Recommended Dilution:	WB
Reactivity:	Human
Host:	Rabbit
Isotype:	IgG
Clonality:	Polyclonal
Immunogen:	The immunogen for anti-PER2 antibody: synthetic peptide directed towards the middle region of human PER2. Synthetic peptide located within the following region: VAECVYCENKEKGNICIPYEEDIPSLGLSEVSDTKEDENGSPLNHRIEEQ
Formulation:	Liquid. Purified antibody supplied in 1x PBS buffer with 0.09% (w/v) sodium azide and 2% sucrose. <i>Note that this product is shipped as lyophilized powder to China customers.</i>
Purification:	Affinity Purified
Conjugation:	Unconjugated
Storage:	Store at -20°C as received.
Stability:	Stable for 12 months from date of receipt.
Predicted Protein Size:	136 kDa
Gene Name:	period circadian clock 2
Database Link:	NP_073728 Entrez Gene 8864 Human O15055



[View online »](#)

Background:

This gene is a member of the Period family of genes and is expressed in a circadian pattern in the suprachiasmatic nucleus, the primary circadian pacemaker in the mammalian brain. Genes in this family encode components of the circadian rhythms of locomotor activity, metabolism, and behavior. Circadian expression in the suprachiasmatic nucleus continues in constant darkness, and a shift in the light/dark cycle evokes a proportional shift of gene expression in the suprachiasmatic nucleus. The specific function of this gene is not yet known. This gene is a member of the Period family of genes and is expressed in a circadian pattern in the suprachiasmatic nucleus, the primary circadian pacemaker in the mammalian brain. Genes in this family encode components of the circadian rhythms of locomotor activity, metabolism, and behavior. Circadian expression in the suprachiasmatic nucleus continues in constant darkness, and a shift in the light/dark cycle evokes a proportional shift of gene expression in the suprachiasmatic nucleus. The specific function of this gene is not yet known. Publication Note: This RefSeq record includes a subset of the publications that are available for this gene. Please see the Entrez Gene record to access additional publications.

Synonyms:

FASPS; FASPS1

Note:

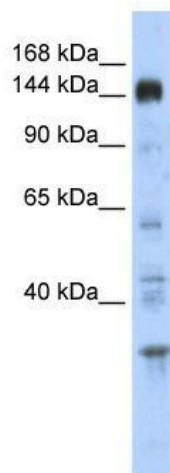
Immunogen Sequence Homology: Rat: 100%; Human: 100%; Mouse: 100%; Horse: 79%

Protein Families:

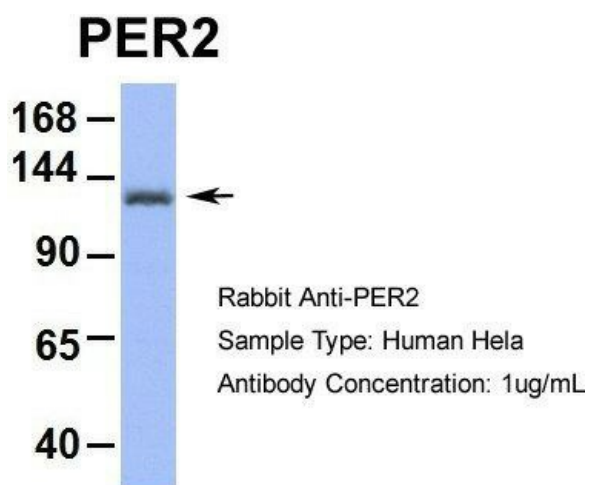
Druggable Genome, Transcription Factors

Protein Pathways:

Circadian rhythm - mammal

Product images:

WB Suggested Anti-PER2 Antibody Titration: 0.2-1 ug/ml; ELISA Titer: 1: 12500; Positive Control: Human Placenta



Host: Rabbit; Target Name: PER2; Sample Tissue: Human HeLa; Antibody Dilution: 1.0 ug/ml