

## Product datasheet for **TA345360**

### Rabenosyn 5 (RBSN) Rabbit Polyclonal Antibody

#### Product data:

Product Type:	Primary Antibodies
Applications:	WB
Recommended Dilution:	WB
Reactivity:	Human
Host:	Rabbit
Isotype:	IgG
Clonality:	Polyclonal
Immunogen:	The immunogen for anti-ZFYVE20 antibody: synthetic peptide directed towards the N terminal of human ZFYVE20. Synthetic peptide located within the following region: MASLDDPGEVREGFLCPLCKDLQSFYQLHSHYEEHSGEDRDVKGQIKS
Formulation:	Liquid. Purified antibody supplied in 1x PBS buffer with 0.09% (w/v) sodium azide and 2% sucrose. <i>Note that this product is shipped as lyophilized powder to China customers.</i>
Purification:	Affinity Purified
Conjugation:	Unconjugated
Storage:	Store at -20°C as received.
Stability:	Stable for 12 months from date of receipt.
Predicted Protein Size:	89 kDa
Gene Name:	rabenosyn, RAB effector
Database Link:	<a href="#">NP_071735</a> <a href="#">Entrez Gene 64145 Human</a> <a href="#">Q9H1K0</a>
Background:	ZFYVE20 is the Rab4/Rab5 effector protein acting in early endocytic membrane fusion and membrane trafficking of recycling endosomes. Required for endosome fusion either homotypically or with clathrin coated vesicles. ZFYVE20 plays a role in the lysosomal
Synonyms:	Rabenosyn-5; ZFYVE20
Note:	Immunogen Sequence Homology: Human: 100%; Dog: 93%; Pig: 93%; Rat: 93%; Horse: 93%; Bovine: 93%; Rabbit: 93%; Guinea pig: 86%; Mouse: 79%

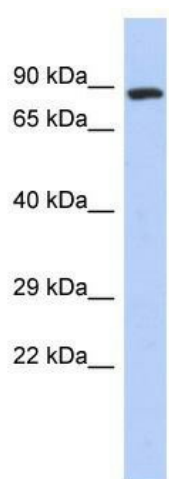


[View online »](#)

Protein Families: Transcription Factors

Protein Pathways: Endocytosis

### Product images:



WB Suggested Anti-ZFYVE20 Antibody Titration:  
0.2-1 ug/ml; ELISA Titer: 1: 12500; Positive  
Control: Human Stomach