

## Product datasheet for **TA345352**

### PXR (NR112) Rabbit Polyclonal Antibody

#### Product data:

Product Type:	Primary Antibodies
Applications:	WB
Recommended Dilution:	WB
Reactivity:	Human
Host:	Rabbit
Isotype:	IgG
Clonality:	Polyclonal
Immunogen:	The immunogen for Anti-NR112 antibody is: synthetic peptide directed towards the N-terminal region of Human NR112. Synthetic peptide located within the following region: AELASNHPRGPEANLEVRPKESWNHADVFVHCEDTESVPGKPSVNADEEVG
Formulation:	Liquid. Purified antibody supplied in 1x PBS buffer with 0.09% (w/v) sodium azide and 2% sucrose. <i>Note that this product is shipped as lyophilized powder to China customers.</i>
Purification:	Affinity Purified
Conjugation:	Unconjugated
Storage:	Store at -20°C as received.
Stability:	Stable for 12 months from date of receipt.
Predicted Protein Size:	52 kDa
Gene Name:	nuclear receptor subfamily 1 group I member 2
Database Link:	<a href="#">NP_003880</a> <a href="#">Entrez Gene 8856 Human</a> <a href="#">O75469</a>



[View online »](#)

**Background:**

NR1I2 belongs to the nuclear receptor superfamily, members of which are transcription factors characterized by a ligand-binding domain and a DNA-binding domain. NR1I2 contains a zinc finger domain. NR1I2 is a transcriptional regulator of the cytochrome P450 gene CYP3A4, binding to the response element of the CYP3A4 promoter as a heterodimer with the 9-cis retinoic acid receptor RXR. It is activated by a range of compounds that induce CYP3A4, including dexamethasone and rifampicin. NR1I2 belongs to the nuclear receptor superfamily, members of which are transcription factors characterized by a ligand-binding domain and a DNA-binding domain.

**Synonyms:**

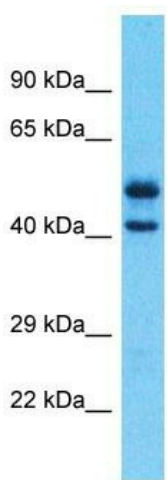
BXR; ONR1; PAR; PAR1; PAR2; PARq; PRR; PXR; SAR; SXR

**Note:**

Immunogen Sequence Homology: Human: 100%

**Protein Families:**

Druggable Genome, Nuclear Hormone Receptor, Transcription Factors

**Product images:**

Host: Rabbit

Target Name: NR1I2

Sample Tissue: Uterus Tumor Lysate

Antibody Dilution: 1.0 µg/ml

Host: Rabbit; Target Name: NR1I2; Sample Tissue: Uterus Tumor lysates; Antibody Dilution: 1.0 ug/ml