

## Product datasheet for **TA345347**

### TEF1 (TEAD1) Rabbit Polyclonal Antibody

#### Product data:

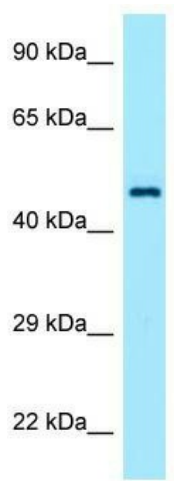
Product Type:	Primary Antibodies
Applications:	WB
Recommended Dilution:	WB
Reactivity:	Human
Host:	Rabbit
Isotype:	IgG
Clonality:	Polyclonal
Immunogen:	The immunogen for anti-TEAD1 antibody: synthetic peptide directed towards the C terminal of human TEAD1. Synthetic peptide located within the following region: YMMNSVLENFTILLVVTNRDTQETLLCMACVFEVSNSEHGAQHIIYRLVK
Formulation:	Liquid. Purified antibody supplied in 1x PBS buffer with 0.09% (w/v) sodium azide and 2% sucrose. <i>Note that this product is shipped as lyophilized powder to China customers.</i>
Purification:	Affinity Purified
Conjugation:	Unconjugated
Storage:	Store at -20°C as received.
Stability:	Stable for 12 months from date of receipt.
Predicted Protein Size:	46 kDa
Gene Name:	TEA domain transcription factor 1
Database Link:	<a href="#">NP_068780</a> <a href="#">Entrez Gene 7003 Human</a> <a href="#">P28347</a>
Background:	TEAD1 is a transcriptional enhancer. It interacts with a muscle-specific cofactor to promote skeletal muscle gene expression. The mutation in the TEAD1 gene is the cause of Sveinsson's chorioretinal atrophy
Synonyms:	AA; NTEF-1; REF1; TCF-13; TCF13; TEAD-1; TEF-1
Note:	Immunogen Sequence Homology: Dog: 100%; Pig: 100%; Rat: 100%; Horse: 100%; Human: 100%; Mouse: 100%; Bovine: 100%; Rabbit: 100%; Zebrafish: 100%; Guinea pig: 100%



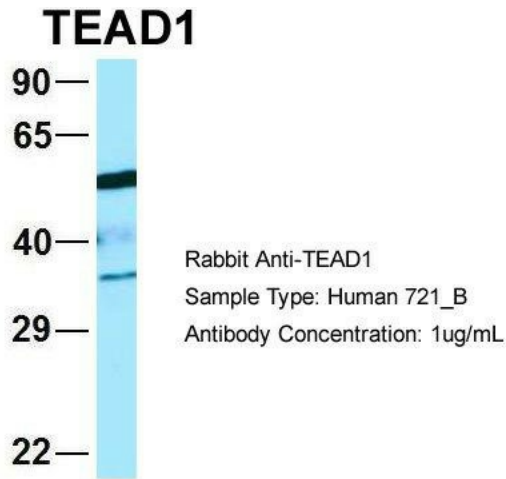
[View online »](#)

Protein Families: Transcription Factors

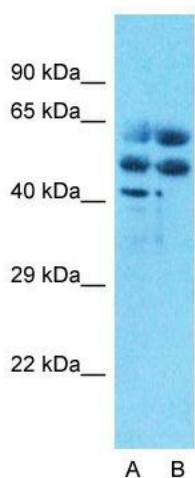
**Product images:**



Host: Rabbit; Target Name: TEAD1; Antibody Dilution: 1.0 ug/ml; Sample Tissue: Human Placenta



Human 721\_B; Host: Rabbit; Target Name: WT1; Sample Tissue: 721\_B; Antibody Dilution: 1.0 ug/ml; TEAD1 is supported by BioGPS gene expression data to be expressed in 721\_B



### Anti-TEAD1 Western Blot & Peptide Block Validation

Lysate: Fetal Heart

Lane A: Primary Antibody  
Lane B: Primary Antibody + Blocking Peptide

Primary Antibody Concentration: 1.0µg/ml  
Peptide Concentration: 5.0µg/ml  
Lysate Quantity: 25µg/lane  
Gel Concentration: 12%

Host: Rabbit; Target Name: TEAD1; Sample Tissue: Human Fetal Muscle; Lane A: Primary Antibody; Lane B: Primary Antibody + Blocking Peptide; Primary Antibody Concentration: 1 ug/ml; Peptide Concentration: 5 ug/ml; Lysate Quantity: 25 ug/lane/lane; Gel Concentration: 0.12