

Product datasheet for **TA345346**

FOXM1 Rabbit Polyclonal Antibody

Product data:

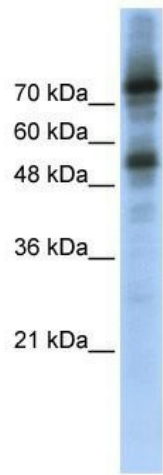
Product Type:	Primary Antibodies
Applications:	WB
Recommended Dilution:	WB
Reactivity:	Human
Host:	Rabbit
Isotype:	IgG
Clonality:	Polyclonal
Immunogen:	The immunogen for anti-FOXM1 antibody: synthetic peptide directed towards the middle region of human FOXM1. Synthetic peptide located within the following region: ANRSLTEGLVLDTMNDSLSKILLDISFPGLDEDPLGPDNINWSQFIPELQ
Formulation:	Liquid. Purified antibody supplied in 1x PBS buffer with 0.09% (w/v) sodium azide and 2% sucrose. <i>Note that this product is shipped as lyophilized powder to China customers.</i>
Purification:	Affinity Purified
Conjugation:	Unconjugated
Storage:	Store at -20°C as received.
Stability:	Stable for 12 months from date of receipt.
Predicted Protein Size:	84 kDa
Gene Name:	forkhead box M1
Database Link:	NP_068772 Entrez Gene 2305 Human Q08050
Background:	This protein acts as a Transcriptional activatory factor. May play a role in the control of cell proliferation.
Synonyms:	FKHL16; FOXM1B; HFH-11; HFH11; HNF-3; INS-1; MPHOSPH2; MPP-2; MPP2; PIG29; TGT3; TRIDENT
Note:	Immunogen Sequence Homology: Human: 100%; Pig: 93%; Rat: 93%; Mouse: 93%; Rabbit: 93%; Guinea pig: 93%; Dog: 79%



[View online »](#)

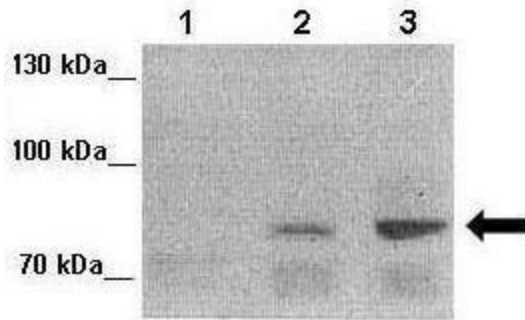
Protein Families: Transcription Factors

Product images:



FOXM1

WB Suggested Anti-FOXM1 Antibody Titration:
0.2-1 ug/ml; ELISA Titer: 1: 62500; Positive
Control: Transfected 293T



Lanes: Lane 1: 25ug MIA PaCa-2 human
pancreatic cancer cell line); Lane 2: 25ug MDA-
MB-231 cell lysate; Lane 3: 25ug Huh-7 cell lysate;
Primary Antibody Dilution: 1: 2000; Secondary
Antibody: Anti-rabbit-HRP; Secondary Antibody
Dilution: 1: 5000; Gene Name: FOXM1; Submitted
by: Andrei L. Gartel, University of Illinois at
Chicago;