

Product datasheet for **TA345341**

BACH2 Rabbit Polyclonal Antibody

Product data:

Product Type:	Primary Antibodies
Applications:	IHC, WB
Recommended Dilution:	WB, IHC
Reactivity:	Human
Host:	Rabbit
Isotype:	IgG
Clonality:	Polyclonal
Immunogen:	The immunogen for anti-BACH2 antibody: synthetic peptide directed towards the middle region of human BACH2. Synthetic peptide located within the following region: SGRRLEGTDPGTFSERGPPLPRSQTVTVDFCQEMTDKCTTDEQPRKDYT
Formulation:	Liquid. Purified antibody supplied in 1x PBS buffer with 0.09% (w/v) sodium azide and 2% sucrose. <i>Note that this product is shipped as lyophilized powder to China customers.</i>
Purification:	Affinity Purified
Conjugation:	Unconjugated
Storage:	Store at -20°C as received.
Stability:	Stable for 12 months from date of receipt.
Predicted Protein Size:	93 kDa
Gene Name:	BTB domain and CNC homolog 2
Database Link:	NP_068585 Entrez Gene 60468 Human Q9BYV9
Background:	BACH2 belongs to the bZIP family. It is a transcriptional regulator that acts as repressor or activator. The protein binds to Maf recognition elements (MARE) and play important roles in coordinating transcription activation and repression by MAFK.
Synonyms:	BTBD25
Note:	Immunogen Sequence Homology: Human: 100%; Bovine: 100%; Pig: 93%; Rat: 93%; Horse: 93%; Mouse: 93%; Guinea pig: 93%; Rabbit: 86%



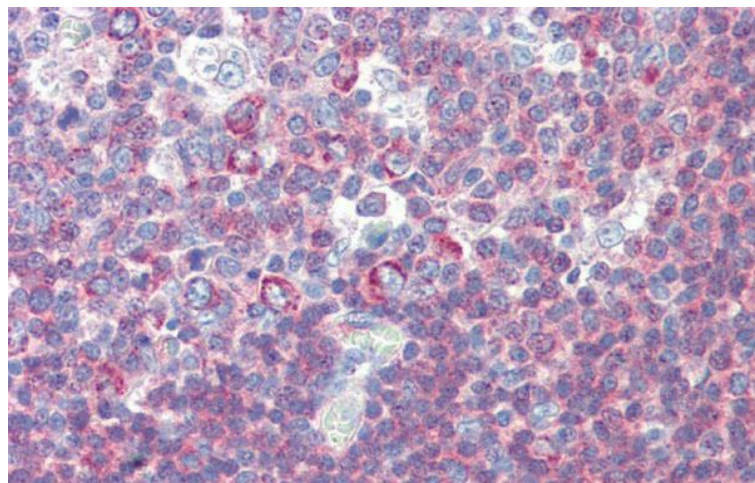
[View online »](#)

Protein Families: Druggable Genome, Transcription Factors

Product images:



WB Suggested Anti-BACH2 Antibody Titration:
0.2-1 ug/ml; ELISA Titer: 1: 1562500; Positive
Control: 293T cell lysate; BACH2 is supported by
BioGPS gene expression data to be expressed in
HEK293T



Human Tonsil