

Product datasheet for **TA345337**

PRDM13 Rabbit Polyclonal Antibody

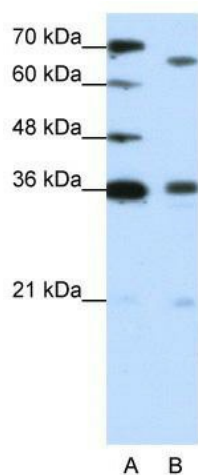
Product data:

Product Type:	Primary Antibodies
Applications:	WB
Recommended Dilution:	WB
Reactivity:	Human
Host:	Rabbit
Isotype:	IgG
Clonality:	Polyclonal
Immunogen:	The immunogen for anti-PRDM13 antibody: synthetic peptide directed towards the C terminal of human PRDM13. Synthetic peptide located within the following region: SLLAKAGDGPGEAEPGYPPEPGDPKSDSDVDVCFTDDQSDPEVGGGGGERD
Formulation:	Liquid. Purified antibody supplied in 1x PBS buffer with 0.09% (w/v) sodium azide and 2% sucrose. <i>Note that this product is shipped as lyophilized powder to China customers.</i>
Purification:	Affinity Purified
Conjugation:	Unconjugated
Storage:	Store at -20°C as received.
Stability:	Stable for 12 months from date of receipt.
Predicted Protein Size:	75 kDa
Gene Name:	PR domain 13
Database Link:	NP_067633 Entrez Gene 59336 Human Q9H4Q3
Background:	PRDM13 may be involved in transcriptional regulation.
Synonyms:	MU-MB-20.220; PFM10
Note:	Immunogen Sequence Homology: Human: 100%; Rabbit: 100%; Rat: 92%; Mouse: 92%; Dog: 87%; Pig: 87%; Bovine: 87%



[View online »](#)

Product images:



WB Suggested Anti-PRDM13 Antibody Titration:
1.25 ug/ml; Positive Control: Jurkat cell lysate;
PRDM13 is supported by BioGPS gene expression
data to be expressed in Jurkat