

Product datasheet for **TA345332**

OVOL2 Rabbit Polyclonal Antibody

Product data:

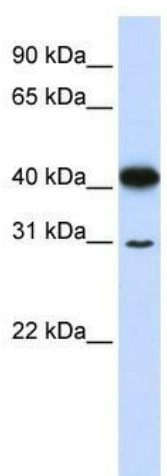
Product Type:	Primary Antibodies
Applications:	WB
Recommended Dilution:	WB, IF
Reactivity:	Human
Host:	Rabbit
Isotype:	IgG
Clonality:	Polyclonal
Immunogen:	The immunogen for anti-OVOL2 antibody: synthetic peptide directed towards the N terminal of human OVOL2. Synthetic peptide located within the following region: PKVFLVKRRSLGVSRSWDELDPDEKRADTYIPVGLGRLLHDPPEDCRS DG
Formulation:	Liquid. Purified antibody supplied in 1x PBS buffer with 0.09% (w/v) sodium azide and 2% sucrose. <i>Note that this product is shipped as lyophilized powder to China customers.</i>
Purification:	Affinity Purified
Conjugation:	Unconjugated
Storage:	Store at -20°C as received.
Stability:	Stable for 12 months from date of receipt.
Predicted Protein Size:	30 kDa
Gene Name:	ovo like zinc finger 2
Database Link:	NP_067043 Entrez Gene 58495 Human Q9BRP0
Background:	OVOL2 contains 4 C2H2-type zinc fingers. It belongs to the krueppel C2H2-type zinc-finger protein family. It is a DNA-binding protein that binds to the 5'-G[GCT]GGGGG-3' core sequence. Probably acts as a transcription regulator.
Synonyms:	EUROIMAGE566589; ZNF339
Note:	Immunogen Sequence Homology: Dog: 100%; Horse: 100%; Human: 100%; Bovine: 100%; Mouse: 93%



[View online »](#)

Protein Families: Transcription Factors

Product images:



WB Suggested Anti-OVOL2 Antibody Titration:
0.2-1 ug/ml; ELISA Titer: 1: 312500; Positive
Control: 721_B cell lysate