

Product datasheet for TA345330

ZNF71 Rabbit Polyclonal Antibody

Product data:

Product Type:	Primary Antibodies
Applications:	WB
Recommended Dilution:	WB
Reactivity:	Human
Host:	Rabbit
Isotype:	IgG
Clonality:	Polyclonal
Immunogen:	The immunogen for anti-ZNF71 antibody: synthetic peptide directed towards the N terminal of human ZNF71. Synthetic peptide located within the following region: MKELDPKNDISEDKLSVVGEGATGGPTRNGARGPGSEGVWEPGSWPERPRG
Formulation:	Liquid. Purified antibody supplied in 1x PBS buffer with 0.09% (w/v) sodium azide and 2% sucrose.
Purification:	Affinity Purified
Conjugation:	Unconjugated
Storage:	Store at -20°C as received.
Stability:	Stable for 12 months from date of receipt.
Predicted Protein Size:	54 kDa
Gene Name:	zinc finger protein 71
Database Link:	NP_067039 Entrez Gene 58491 Human Q9NQZ8
Background:	ZNF71 belongs to the krueppel C2H2-type zinc-finger protein family and may be involved in transcriptional regulation.

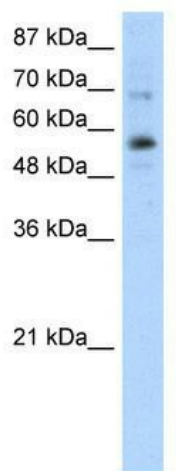


Synonyms: EZFIT

Note: Immunogen Sequence Homology: Human: 100%; Yeast: 75%

Protein Families: Druggable Genome, Transcription Factors

Product images:



WB Suggested Anti-ZNF71 Antibody Titration:
0.2-1 ug/ml; Positive Control: Jurkat cell lysate