

Product datasheet for **TA345326**

GRHL3 Rabbit Polyclonal Antibody

Product data:

Product Type:	Primary Antibodies
Applications:	IHC, WB
Recommended Dilution:	WB, IHC
Reactivity:	Human
Host:	Rabbit
Isotype:	IgG
Clonality:	Polyclonal
Immunogen:	The immunogen for anti-GRHL3 antibody: synthetic peptide directed towards the C terminal of human GRHL3. Synthetic peptide located within the following region: EEVFDALMLKTPDLKGLRNAISEKYGFPEENIYKVYKKCKRGILVNMDNN
Formulation:	Liquid. Purified antibody supplied in 1x PBS buffer with 0.09% (w/v) sodium azide and 2% sucrose. <i>Note that this product is shipped as lyophilized powder to China customers.</i>
Purification:	Affinity Purified
Conjugation:	Unconjugated
Storage:	Store at -20°C as received.
Stability:	Stable for 12 months from date of receipt.
Predicted Protein Size:	57 kDa
Gene Name:	grainyhead like transcription factor 3
Database Link:	NP_937817 Entrez Gene 57822 Human Q8TE85



[View online »](#)

Background:

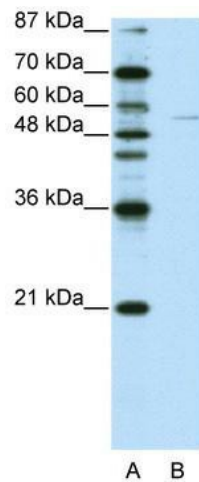
GRHL3 is a member of the grainyhead family of transcription factors. GRHL3 interacts with leader-binding protein 32 (LBP-32) and brother of mammalian grainyhead (BOM), and may function as a transcription factor during development. Multiple transcript variants encoding distinct isoforms have been identified for this gene. This gene encodes a member of the grainyhead family of transcription factors. The encoded protein interacts with leader-binding protein 32 (LBP-32) and brother of mammalian grainyhead (BOM), and may function as a transcription factor during development. Multiple transcript variants encoding distinct isoforms have been identified for this gene. Additional transcript variants have been described, but their biological nature has not been determined.

Synonyms:

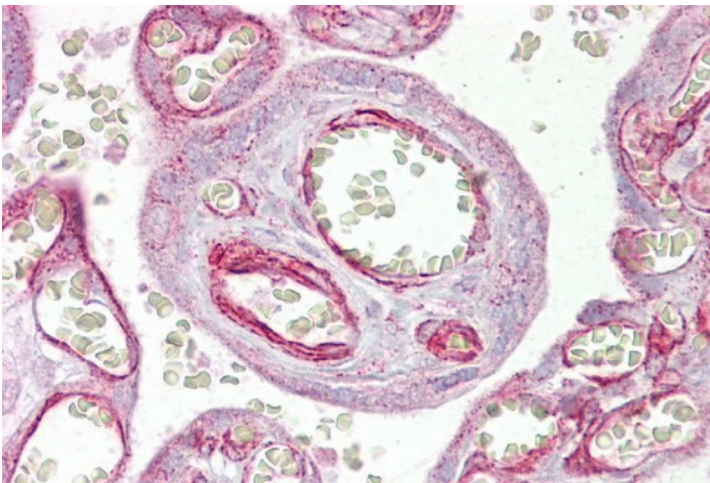
SOM; TFCP2L4; VWS2

Note:

Immunogen Sequence Homology: Dog: 100%; Horse: 100%; Human: 100%; Bovine: 100%; Rabbit: 100%; Pig: 93%; Rat: 93%; Mouse: 86%; Guinea pig: 86%

Product images:

WB Suggested Anti-GRHL3 Antibody Titration:
0.2-1 ug/ml; ELISA Titer: 1: 1562500; Positive
Control: Jurkat cell lysate



Placenta